

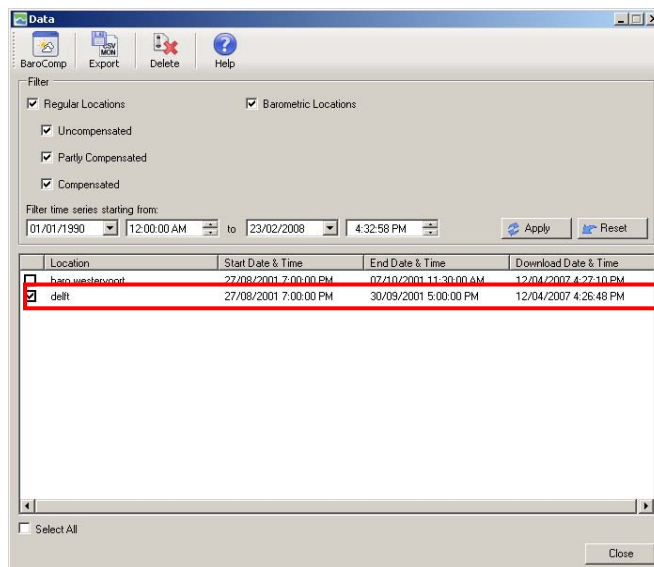



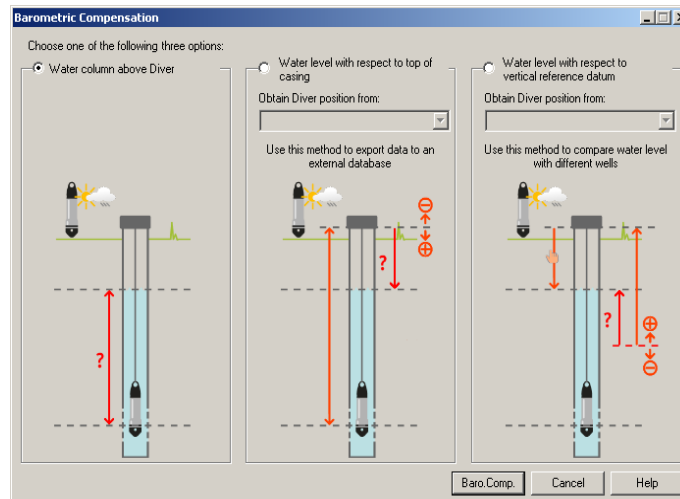
Compensating Diver Data

1. Click the  **Baro Comp** or  **Data** button from the main toolbar.
*You may also right click on the data set in the project tree to go directly to the Baro Compensation dialog.
2. Select one or more time-series data from the Data dialog.



3. Select the  **BaroComp** button from the **Data** dialog toolbar.
4. Select the desired barometric compensation method from the **BaroComp** dialog (shown on following page). You may choose from five barometric compensation methods:
 1. Water Column above Diver
 2. Water level with respect to Top of Casing *using Cable Length*
 3. Water level with respect to Top of Casing *using Manual Measurement*
 4. Water Level with respect to VRD *using Cable Length*
 5. Water Level with respect to VRD *using Manual Measurement*

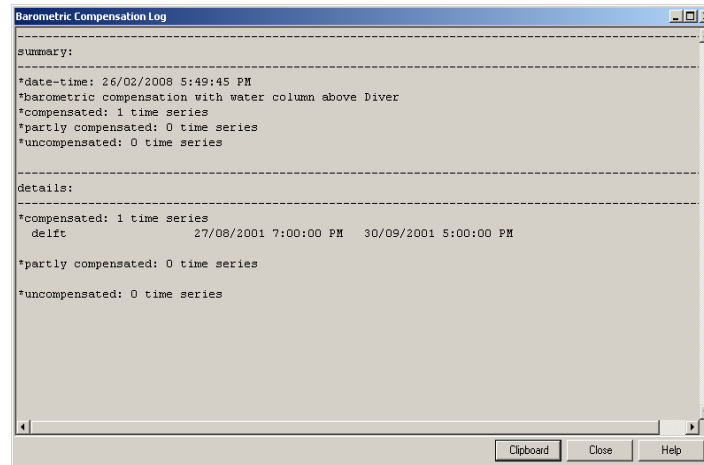
Note: Each barometric compensation method requires that certain data be entered before the compensation can be performed. Please refer to the chart on page 40 of the Diver-Office user's manual for more information on the data requirements for each compensation method.



- Once the method is chosen, select the **[Baro.Comp.]** button to perform the barometric compensation.

Note: If the compensation fails, the type of missing information will be indicated in the log dialog.

- When the compensation is complete, the barometric compensation log will show, displaying a summary with details.



- Click the **[Close]** button to finish. You can now view the compensated data in the time-series table and plot. You will notice that the time series symbol in the **Project Tree** will change once compensation has been performed;



means that the data was **Partially Compensated**



means that all the data in the time series was **Compensated**



means that the data is **Uncompensated**.