

Diver-Office Network

LICENSING GUIDE



Copyright notice:

© 2009 Schlumberger Water Services. All rights reserved.

No portion of the contents of this publication may be reproduced or transmitted in any form or by any means without the express written permission of Schlumberger Water Services.

Printed in Canada

2009



SWS Overview

Schlumberger Water Services

Schlumberger has built a global organization to leverage its leading-edge oilfield technologies for worldwide water resource management applications. Through investment in water industry expertise and proprietary technology, Schlumberger has augmented its established leadership in reservoir evaluation and characterization with specialized tools and a dedicated team of project managers, engineers, geophysicists, and hydrogeologists to provide comprehensive assessment and management of aquifer systems. With a global presence and support infrastructure, Schlumberger Water Services (SWS) has successfully completed projects around the world, helping to meet future water demands in a wide variety of environments and applications. Schlumberger Water Services provides public and private sector clients with the solutions for addressing short-term and long-term water challenges.

Differentiation through Technology

Continual investment in technology is a key company strategy which provides SWS with a toolbox of advanced, cost-effective water exploration, utilization, and optimization solutions. From planning sustainable drinking water to securing water sources for industrial processes, our unique technologies deliver results unobtainable by traditional methods. Our leading technologies include:

Subsurface Characterization and Logging

Schlumberger is the worldwide leader in openhole logging with state-of-the art imaging tools engineered for characterizing subsurface environments.

- Magnetic resonance identifies pore size distribution, hydraulic conductivity, etc.
- Epithermal neutron porosity estimates water-filled porosity
- Bulk density and photoelectric effect defines total porosity, lithology
- Well flow logging offers upward/downward flow velocity/rate measurements
- Spectral natural gamma ray logs bulk matrix geochemistry and mineralogy
- Borehole electrical imaging highlights fracture orientation and aperture

Field Monitoring

Fully integrated monitoring packages combine high-quality field instrumentation with data transfer and data management technologies. Our field technicians are qualified to characterize, assess, and deploy optimal groundwater monitoring technologies for your site.

- Real-time, wireless data transfer to centralized information management systems
- Multilevel well systems monitor any number of zones in a single borehole
- Measure pressure under shut-in conditions, sample fluids without repeated purging
- Conduct a variety of hydraulic tests
- Frequent long-term measuring of conductivity, temperature, and water levels

Analysis & Data Management

Field, analytical, and spatial data are all critical components of a successful groundwater management strategy. Schlumberger Water Services can help you to integrate, analyze and report on these many data types.

- Customized data checking ensures consistency with local regulation
- Cross-section interpretations of geologic and hydrogeologic data validate conceptual models

- Advanced borehole logs highlight geologic features critical to subsurface characterization
- Customized reports that address compliance guidelines and client needs

Modeling & Simulation

Advanced modeling programs address geologically complex site conditions that extend beyond traditional flow and transport modeling. Our programs provide the highest degree of accuracy necessary to minimize uncertainty.

- Hydrogeologic conceptual models are developed directly within the data management system to support input for various numeric models
- Models may incorporate multiphase flow, density-dependent flow, air flow, discrete fractures, and surface water and groundwater interactions
- Aqueous geochemical analysis and modeling predict changes to water quality
- Three-dimensional visualization tools reveal spatial and temporal trends

Software Licensing

Types of Licenses

Standalone

A **Standalone** license provides one computer with one license to run one SWS program for a limited time. Standalone licenses are “node-locked” meaning that they are only valid for the computer from which the license is requested.

Network

A **Network** license provides your organization with the flexibility to manage and administer multiple time-limited licenses from a central license server in a network environment (LAN or WAN). Using the **License Manager** tool, workstations on the network equipped with SWS software, can access and use the available licenses on the license server.

Roaming network licenses provide additional flexibility by allowing workstations to temporarily “checkout” available licenses from the license server, for use when disconnected from the network. When a license is “checked out” from the license server, it is unavailable to other workstations on the network until it is “checked in”. This method of licensing is useful if your SWS software is installed on a laptop computer that is occasionally disconnected from the network, *i.e.*, on travel, in the field, etc.

Trial

A Trial license is a time-limited standalone node-locked license used for evaluating fully-functional SWS software free-of-charge. Once a trial license is expired, the SWS software will become inoperable until a commercial license is purchased.

For more information on SWS software licensing, please contact your distributor.

Requesting a License

Software licenses **must** be requested electronically by the user from the computer on which the license will be used. Network licenses **must** be requested from the computer that will host the license server.

Requesting from Diver-Office Network

The SWS software must already be installed before you can request licenses using this method.

When starting SWS software for the first time, you will be prompted with a **“No License Found”** dialog box.

1. Select the **“Request License”** option and click the **[OK]** button.
2. Fill out the **“License Request”** form, specifying customer information, the license type, and if applicable, the number of licenses and if roaming is required.
3. If the computer is setup to send e-mail, click the **[Email Request]** button to email the request information to your distributor. If the computer is not setup for e-mail, click the **[Create Request File]** button to save the request file to a location on your computer. Make a copy of the file, and transfer it to a computer that is configured for e-mail. Attach the file to a new e-mail message, and send it to your distributor.
4. Once SWS has received your license request, the appropriate license file will be sent back as soon as possible.

Once you have received the license file, you can proceed to install the license (see following section).

Requesting from a License Server

If the computer acting as the license server does not have an installation of the SWS software, you can request a license using the **License Request** tool. This tool is automatically installed to your computer when you install the **License Manager**. If you haven't done so already, please install the **License Manager** (see *Installing Network Licenses* in the following section). Once the license manager is installed, follow the steps below.

1. Select **Start > SWS Software > License Manager > Generate License Request**

2. Fill out the “**License Request**” form, specifying customer information, the license type, and if applicable, the number of licenses and if roaming is required.
3. If the computer is setup to send e-mail, click the **[Email Request]** button to email the request information to your distributor. If the computer is not configured for e-mail, click the **[Create Request File]** button to save the license file to a location on your computer. Make a copy of the file, and transfer it to a computer that is configured for e-mail. Attach the file to a new e-mail message, and send to your distributor..
4. Once SWS has received your license request, the appropriate license file will be returned via e-mail.

Installing a License

Once you have received a license file , you can install the license. Please note, that the license can only be installed on the computer that was used to generate the license request. For standalone licenses, the SWS software must already be installed before you can install a license. For network licenses, the License Manager tool must already be installed before you can install a license. The license installation is different depending on the license type, *e.g.*, network or standalone.

Standalone Licenses

Follow the steps below to install a stand-alone license.

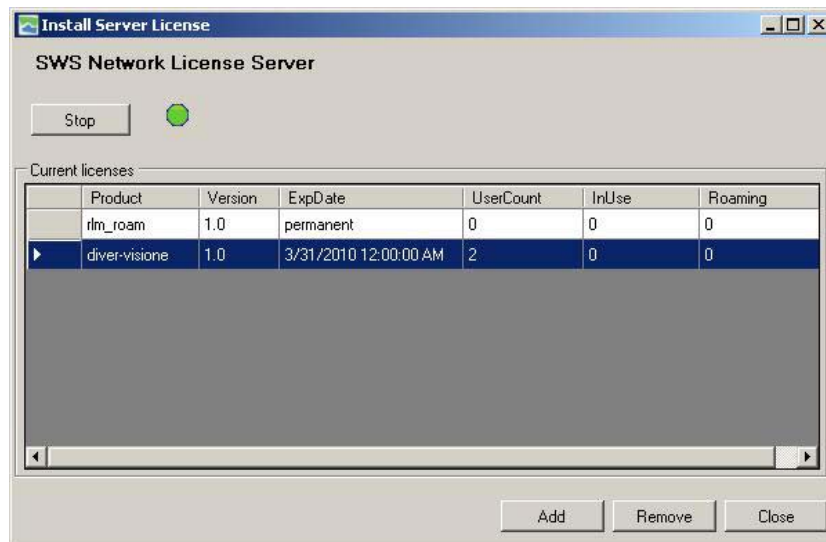
1. Run the SWS software by double-clicking the desktop icon or by selecting the shortcut from the Windows start menu.
2. The software will automatically detect that a license does not exist and will prompt you with the **No License Found** dialog box. Select the **Install License** option button and click the **[OK]** button.
3. The **Install License** dialog will appear on your screen. Select the **Open** button (folder with a green arrow), and navigate to the location on your computer where the license file is saved. Select the license file and then click the **[Open]** button.
4. Click the **[OK]** button.

Network Licenses

For network licensing, the license file must be installed on the license server **and** on each client machine that requires access to the network licenses. Before a license can be installed on the license server, you must install the **License Manager** tool on the computer acting as the license server:

1. On the license server, insert the installation DVD in your DVD-ROM drive to initiate the DVD navigator.
2. Once the **Product Installation** screen appears, click the **Install License Manager** button.
3. Follow the on-screen instructions to complete the installation.

4. Once the installation is finished, select **Start > Programs > SWS Software > License Manager > Install License**
5. Click the **Add** button, and navigate to the location on the computer where the license file is saved. Select the license file and then click the **[Open]** button.
6. The license server service should start automatically, once the license is installed. The “Red” indicator will switch to “Green” when the license service has been successfully started, and information pertaining to the installed license will be displayed in the table below.



You may also monitor the status of the license server service through the web administration page. You can access this page by selecting **Start > Programs > SWS Software > License Manager > Web Administration Page**. For more information on navigating the web administration page, please see the End-User Guide available along the side menu of the web administration page.

7. The network license file must also be installed on each client computer, using the method described under “Standalone Licenses”.

Roaming

The License Manager allows you to check-out licenses from the license server for use when disconnected from the license server, e.g., in the field, when traveling etc. To check-out a license from the license server,

1. Make sure **Diver-Office Network** is opened.
2. Select **Help > Licensing... > Check-out License**, from the main-menu.
3. Enter the duration of the check-out period (number of days), and then click the **[OK]** button.
4. **Diver-Office Network** must be restarted before the license is actually checked out from the license server.

Once the license is checked out, the license will not be available to other users connected to the license server until the license is checked-in. Once the specified number of days has expired, the license will be automatically checked back into the license server. To check in a roaming license manually (before the expiration date),

1. Make sure **Diver-Office Network** is opened.
2. Select **Help > Licensing... > Check-In License**, from the main menu.
3. Diver-Office Network must be restarted before the license is actually checked back into the server.

