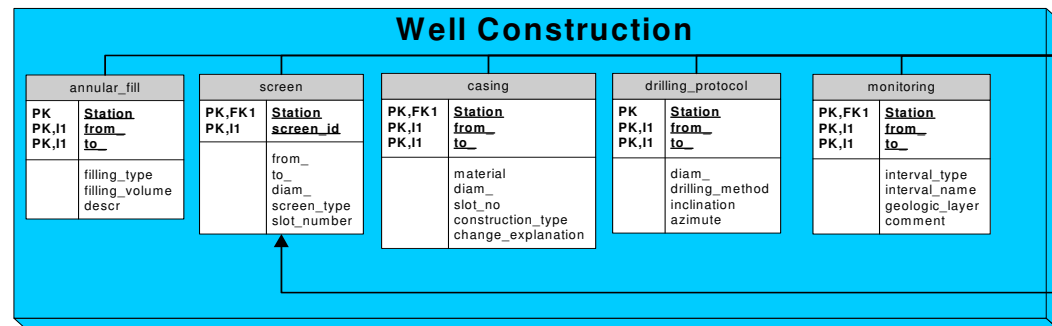
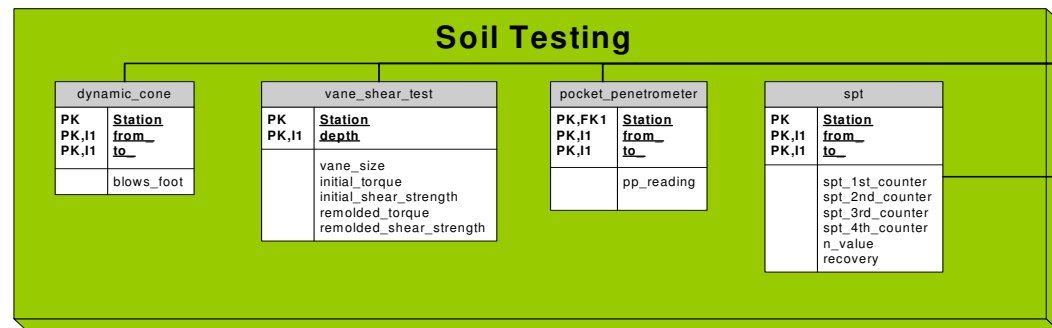
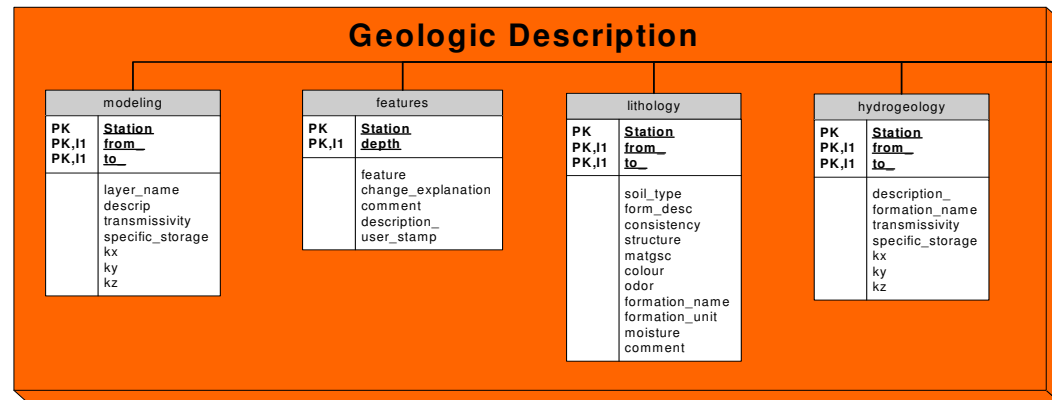
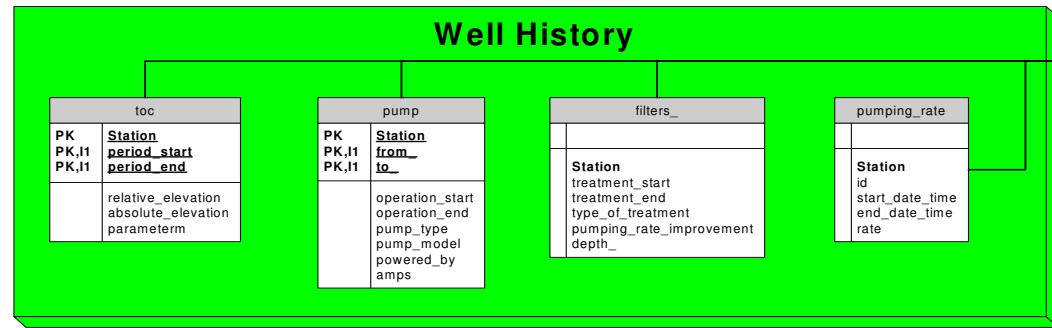
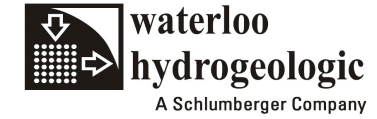


HGA Environmental Data Model



Description

PK,I1	ID
	Type
	Name
	X
	Y
	Zone
	TAG
	Elevation
	TOC
	Depth
	Export
	stn_type
	depth_to_br

Station
station_guid
pda_guid
user_stamp
photo
chfield
purpose_
location_name
location_description
well_owner
address_
city_or_town
county
state_or_province
zip_postal
installation_date
status

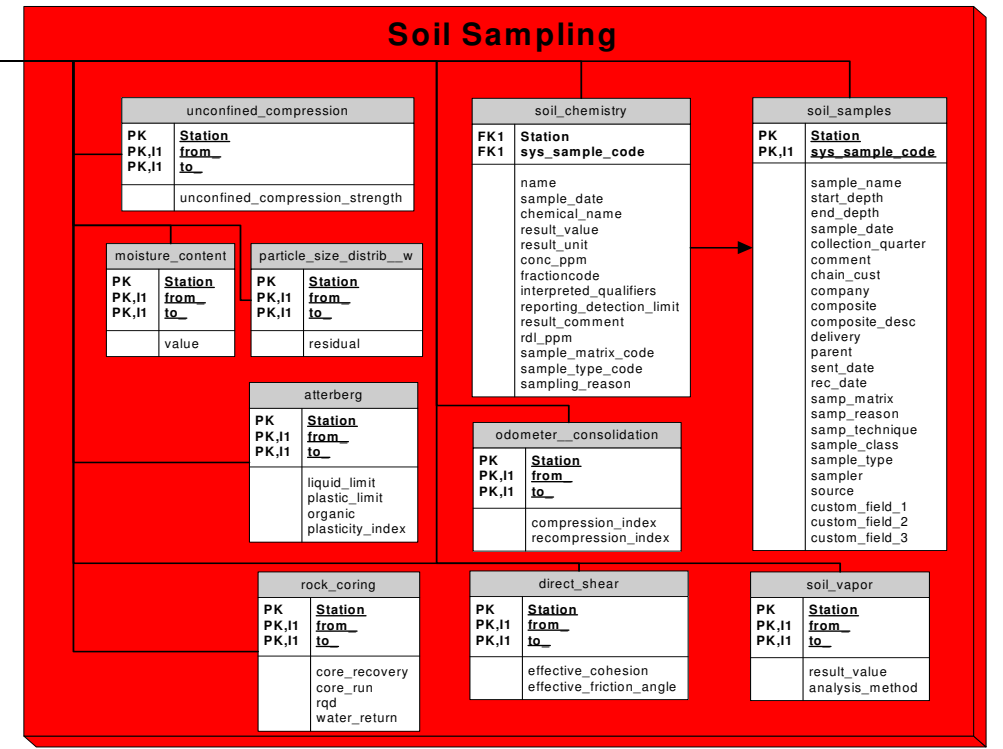
Mining / Exploration

PK	PK,I1	PK,I1	Station	from_to_
				rqd

PK	PK,I1	PK,I1	Station	from_to_
				percentage
				comments
				occurrence
				type_

PK	PK,I1	PK,I1	Station	from_to_
				sampled
				width
				comments

PK	PK,I1	PK,I1	Station	from_to_
				intensity
				occurrence
				type
				comments



Monitoring Event

Station	measurement_date	time_	toc	do	ph	eh	conductivity	temperature	color	turbidity	measurement_method	remark

Station	sys_sample_code	name	sample_date	chemical_name	result_value	result_unit	conc_ppm	reporting_qualifiers	reporting_detection_limit	rdl_ppm	fractioncode	interpreted_qualifiers	start_depth	mid_depth	end_depth	result_comment	sample_matrix_code	sample_type_code	sampling_reason

PK	PK,I1	PK,I1	Station	sys_sample_code
				name
				screen_from_
				screen_to_
				date_
				time_
				chain_cust
				collection_quarter
				comment
				composite
				composite_desc
				company
				delivery
				parent
				sent_date
				rec_date
				samp_matrix
				samp_reason
				samp_technique
				sample_class
				sample_name
				sample_type
				sampler
				source
				custom_field_1
				custom_field_2
				custom_field_3

FK1	FK1	ID	screen_id
			date_
			time_
			dry_indicator_yn
			remark

Geophysics

PK	PK,I1	PK,I1	Station	depth
				value

PK	PK,I1	PK,I1	Station	depth
				gamma

PK	PK,I1	PK,I1	Station	depth
				resistivity

PK	PK,I1	PK,I1	Station	date_time_
				weather

PK	PK,I1	PK,I1	Station	depth
				gauge value

PK	PK,I1	PK,I1	Station	depth
				gauge value