
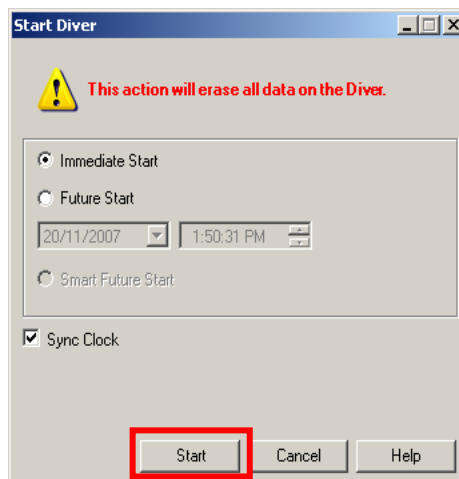



Starting a Diver

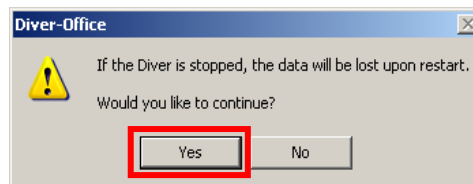
1. Click the  **Start Diver** button from the Diver toolbar.
2. From the Start Diver dialog (shown below), select the appropriate start method. i.e. **Immediate Start**, **Future Start** or **Smart Future Start**. These options are described in more detail in the Diver-Office online help.



3. Click the **[Start]** button to complete the process.

Stopping a Diver


1. Click the  **Stop Diver** button from the Diver toolbar.
2. Click the **[Yes]** button in the warning message that appears.

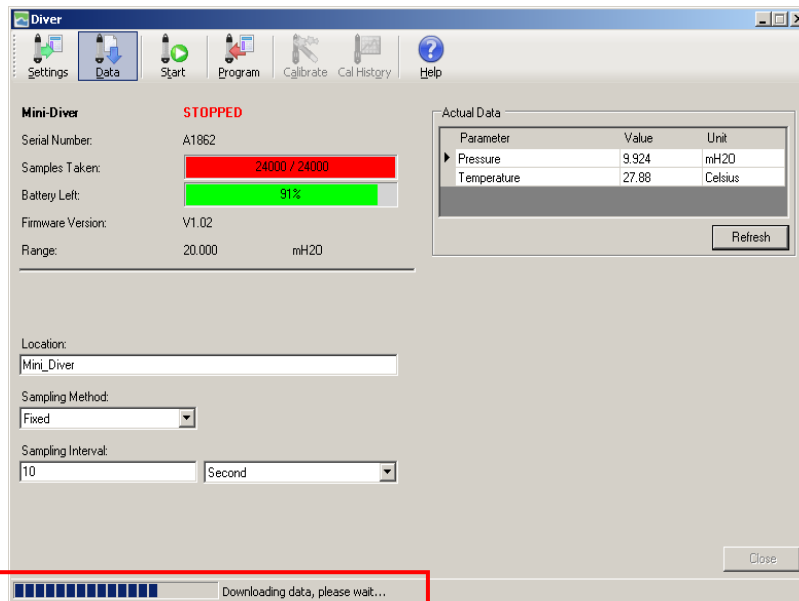


Note: Only the applicable option will show in the Diver dialog box.

 **Stop Diver** or  **Start Diver**

Downloading Diver Data

1. Click the  **Data** button from the Diver toolbar. The download progress is shown in the bottom left corner of the Diver dialog (shown below).



Viewing Downloaded Diver Data

1. Once downloaded, your Diver data-set will be listed in the project tree (shown below).

