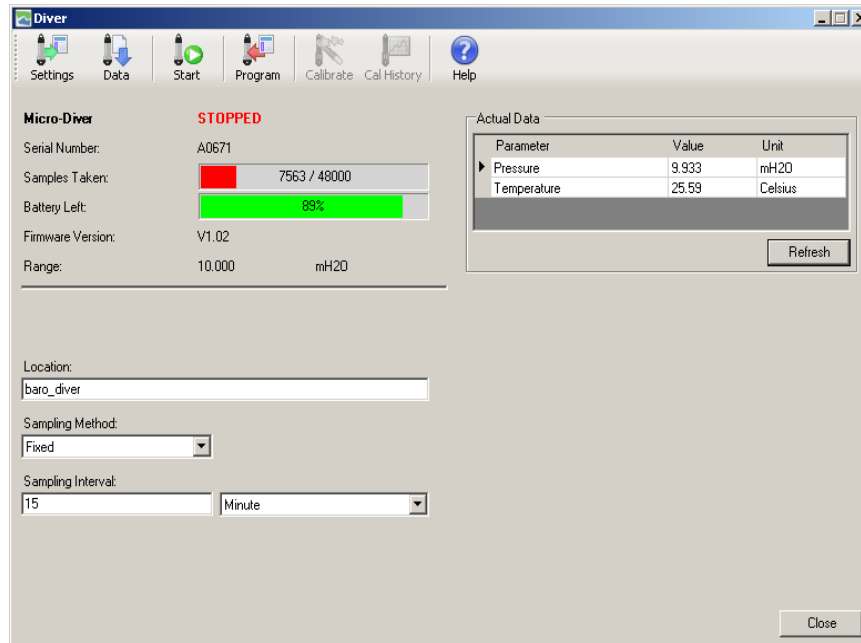


## Read Diver Settings

1. Place a Diver into the USB Reading Unit or connect to the PC interface cable. Ensure that your reading device is connected to your computer.

**Please note:** Reading device must be connected prior to launching Diver-Office

2. From the Diver-Office toolbar, select the  **Diver** button. The **Diver** dialog will open displaying the settings and status of the Diver.



## Program Diver Settings

Enter the following information in the Diver dialog (shown above).

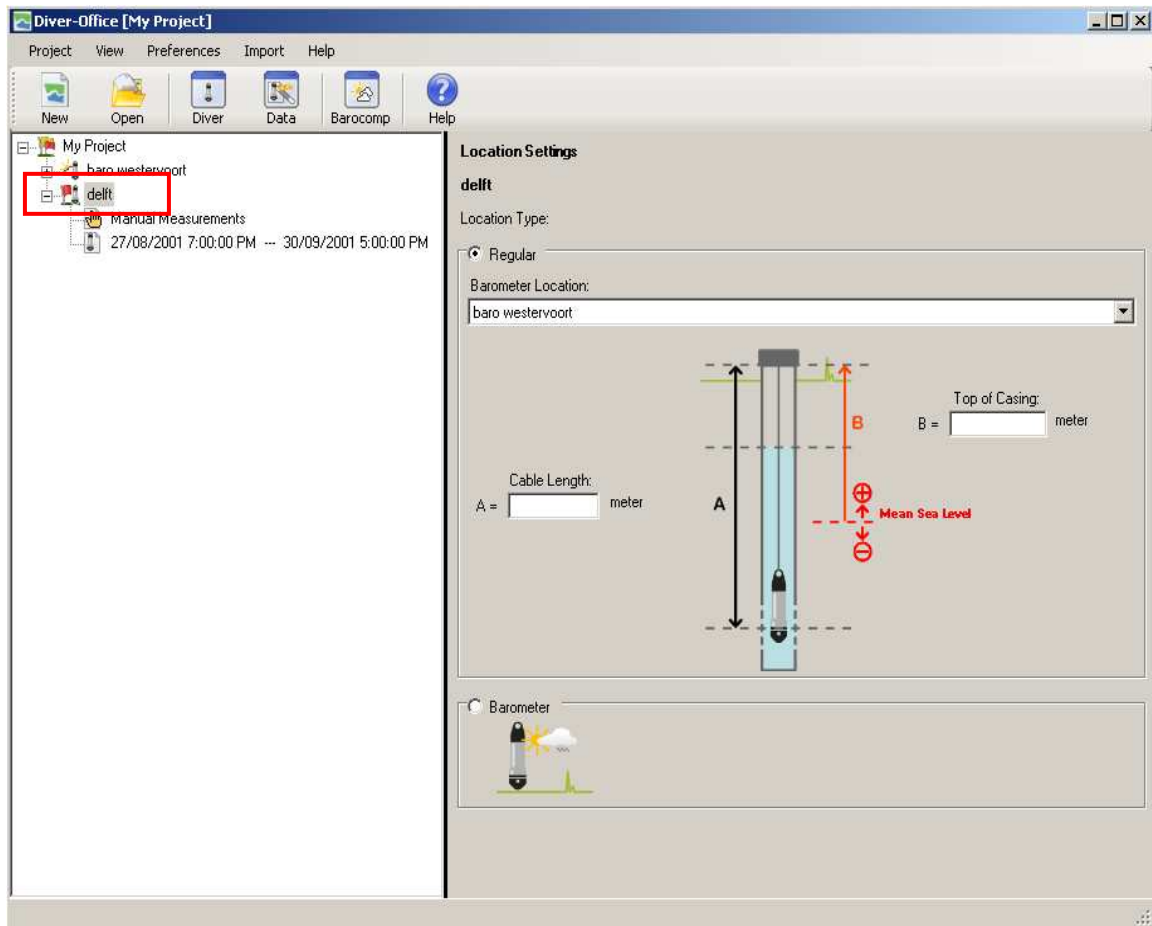
- Location** location name **must** be unique
- Sampling Method** Choose between **Fixed**, **Event Based**, **Setup A**, **B** or **C**, or **User Defined**
- Sampling Interval** Enter a sampling interval (0.5 sec – 99hr)  
\* **Fixed** or **Event Based** method only

**Note:** CTD-Divers and TD-Divers also require an Altitude value (not shown in image above)

2. Once the settings have been entered, click the  **Program** button from the Diver toolbar.

### Defining Location Settings

1. Select the location name from the Project Tree. The project settings will load in the adjacent frame (as shown below)



2. Diver type either **Regular** or **Barometer** are automatically assigned but you can manually change this.
3. If Diver type **Regular**, enter the following settings:

**Barometer Location** Select the corresponding barometer location from the combobox.

Note: This barometer location must already exist in your project

**Cable Length** (optional) Enter the cable length measurement at the location

**Top of Casing** (optional) Enter the top of casing measurement with respect to your vertical datum.