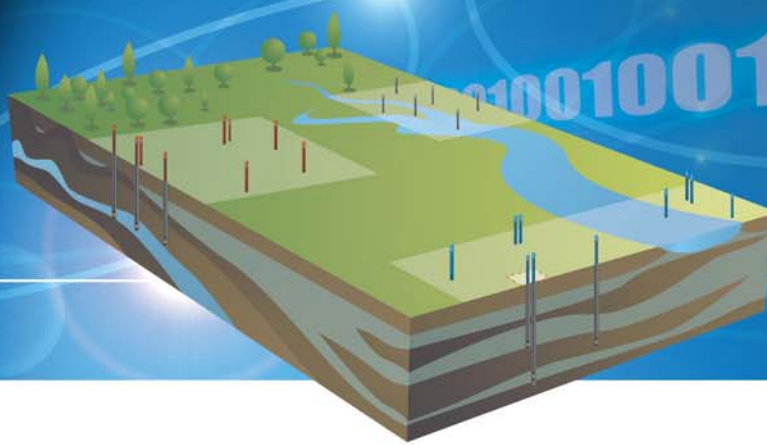


# Diver-VisionE®



## An Essential Application for Handling Diver Data

Diver-VisionE\* desktop application delivers a range of tools for managing well details, borehole lithology, well construction, time-varying data, and site mapping.



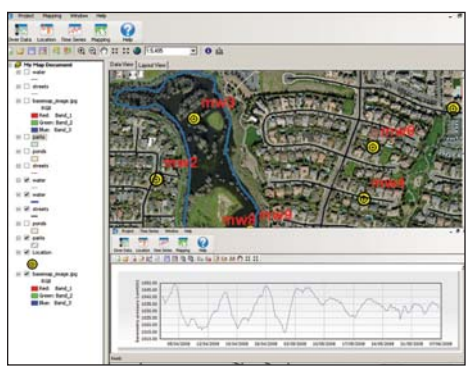
### Complete, user-friendly desktop solution

- **Monitoring Well Data Management** - Create, modify, and display X, Y, Z location data, borehole lithology, well construction design, and time-series.
- **Mapping** - View and label your monitoring well data over a map and display attribute data at each point using the power of the built in ESRI ArcGIS® Engine†
- **Expanded Data Options** - Capture a full range of variables affecting groundwater recharge including precipitation, evaporation, discharge, and manual measurements.
- **QA/QC and Statistics** - Identify data anomalies, understand spatial and temporal trends, and gain confidence in the data assessments.
- **Reporting Automation** - Quickly create customized reports that incorporate logo and company details, site photos, well completion and lithology profiles, monitoring data, sampling dates, and other information.
- **Data Flexibility** - Export location profiles to an image, import/export time-series to MS Excel™ and export to MS Access™, export maps to Google® Earth™ or as ESRI Shapefiles‡.

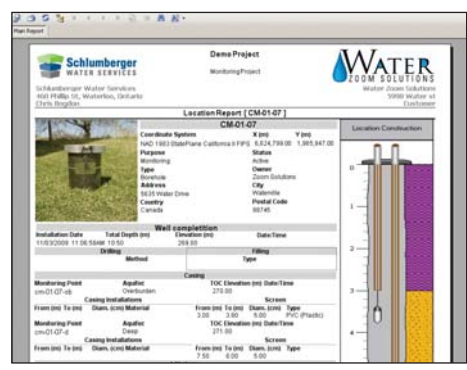
### Mapping powered by ESRI

The industry-standard ESRI ArcGIS® Engine† and Diver-VisionE software are integrated to allow you to plot and analyze data on a map to reveal patterns, relationships, and trends that are not readily apparent in tabular data.

- Display monitoring location points on your map
- Import point, polygon, and polyline layers from ESRI Shapefiles†
- Import base map images from various raster image file types, including .BMP, .GIF, .JPG
- Display attribute data on your map at each location point using the label renderer
- Specify symbology and style settings for point, polygon, and polyline map layers
- View and print map documents in layout view
- Visualize your site using Google® Earth†



Map monitoring wells and plot time-series



Automated well construction and lithology



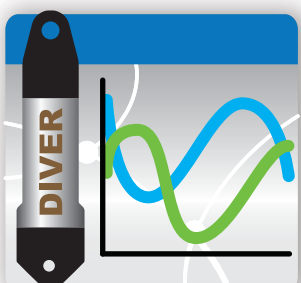
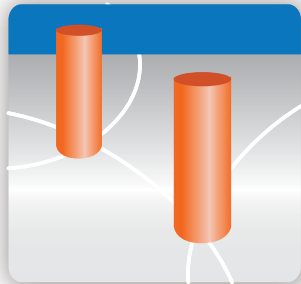
Download a trial at [www.swstechnology.com](http://www.swstechnology.com)



# Complete Management of Diver Data

## Choose the right option for you

Significantly reduce the time required to manage, visualize, and report your Diver data. Diver-VisionONE integrated Diver software provides you with a comprehensive set of tools for managing your Diver data.



	Diver-Office	Diver-Office Network	Diver-VisionONE
<b>Project Management</b>			
Create/open/delete projects	✓	✓	✓
Set database server settings		✓	✓
Backup/restore project		✓	✓
Import Diver-Office projects			✓
<b>Location Data Management</b>			
Manually add monitoring points	✓	✓	✓
Create/open/delete location details			✓
Display construction details and location profile			✓
Import location data, lithology data, and constructive details			✓
Nested wells and monitoring networks			✓
Allow users to add notes for time dependent events and descriptions			✓
Elevation as function of time			✓
Print location profile and event log report			✓
Export location profile to image			✓
<b>Time Series Component</b>			
Display one or more time series on plot and table	✓	✓	✓
Edit time series plot settings			✓
Create pages with time series plots			✓
Export time series to Image	✓	✓	✓
Referencing water level to:			
ground surface elevation			✓
top of casing	✓	✓	✓
vertical reference datum	✓	✓	✓
QA/QC Diver min/max values	✓	✓	✓
Statistical analysis - Max, Min, Avg by			
Week, month, year			✓
Print time series report			✓
Export time series to CSV, MON, NITG	✓	✓	✓
Export time series to MS Excel			✓
<b>Mapping Component</b>			
Map locations and show basemaps			✓
Create local and all major coordinate systems			✓
Create, store and print maps			✓
Import/export shape files			✓
ESRI ArcGIS Engine			✓
Export to Google Earth			✓
<b>Report Component</b>			
Report general location data and detailed location data			✓
<b>Diver Data</b>			
Daylight saving time/standard time	✓	✓	✓
Program Diver settings and start/stop Divers	✓	✓	✓
Conduct barometric compensation	✓	✓	✓
Search location name in tree view		✓	✓
Manually select a manual measurement for barometric compensation		✓	✓
Drag-and-drop time series between locations		✓	✓
Store precipitation, evaporation, discharge, and manual measurement data			✓