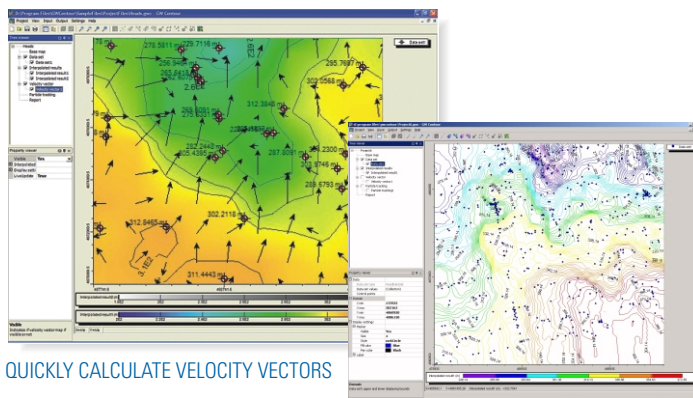


### Professional Applications

- ▶ Graphical mapping and reporting of groundwater levels
- ▶ Preliminary interpolation and contouring of contaminant concentrations
- ▶ Calculating flow direction and magnitude
- ▶ Contouring drawdown data from pumping tests, dataloggers, groundwater monitoring events, weather stations, groundwater models, borehole logs, etc.
- ▶ Gridding layers for use in groundwater flow models, or GIS



QUICKLY CALCULATE VELOCITY VECTORS

### Overview

GW Contour\* represents the latest data interpolation and contouring program to also incorporate advanced techniques for mapping velocity vectors and particle tracks—all within one, easy-to-use program! GW Contour offers the perfect combination of tools and techniques for groundwater and environmental professionals.

### GW Contour Highlights

- ▶ Import data from various sources, including ASCII (TXT, ASCII), ESRI™ Points Shape (SHP), Excel™ (XLS), MS Access™ (MDB), Surfer™ grid (GRD)
- ▶ Import various X, Y, Z data types, including water levels, soil porosity, aquifer hydraulic conductivity, water quality concentrations, contaminant concentrations, ground surface elevations, recharge, etc.
- ▶ Project units include Head (m, cm, ft), Hydraulic Conductivity (m/s, cm/s, m/d, ft/day), Concentrations (mg/l, ppm, ppb, meq/l, ug/l, mg/kg), Velocity (m/s, cm/s, m/day, ft/day), Time (sec, days, months), Coordinates (cm, m, ft)
- ▶ Import and georeference a variety of raster images for use as project base maps (BMP, JPG, TIF, GIF, SVG, EMF, PNG)

### Interpolation & Contouring

GW Contour incorporates the four most commonly applied 2D data interpolation techniques for the groundwater and environmental industry. These include:

- ▶ Natural Neighbor
- ▶ Inverse Distance
- ▶ Kriging
- ▶ Bilinear

Typical data requiring interpolation:

- ▶ Surfaces/horizon elevations (bedrock layers, top of aquifer, bottom of aquifer, topography, etc.)
- ▶ Soil properties (hydraulic conductivity, transmissivity, soil moisture, porosity, etc.)
- ▶ Boundary conditions (recharge, groundwater head, initial concentrations, water divides, etc.)
- ▶ Monitoring data (water levels, contaminant concentrations, water quality, etc.)
- ▶ Miscellaneous data formats (aquifer vulnerability, slope, population, and geospatial analyses, etc.)

### Benefits

- ▶ Unifies your software environment for interpolating and mapping all groundwater and environmental data
- ▶ Calculate forward/reverse particle movements
- ▶ Calculate the velocity vectors (magnitude and direction) you need for groundwater projects
- ▶ Provides you with quick and easy georeferencing for raster-based images used as base maps
- ▶ Addresses various data sets with advanced interpolation techniques

### Velocities Vectors & Particle Tracking

GW Contour offers the unique ability to calculate velocity vectors and particle pathlines, all within the same program! These features assist groundwater professionals in making a preliminary assessment of the subsurface flow regime.

Velocity vectors and particle tracking features:

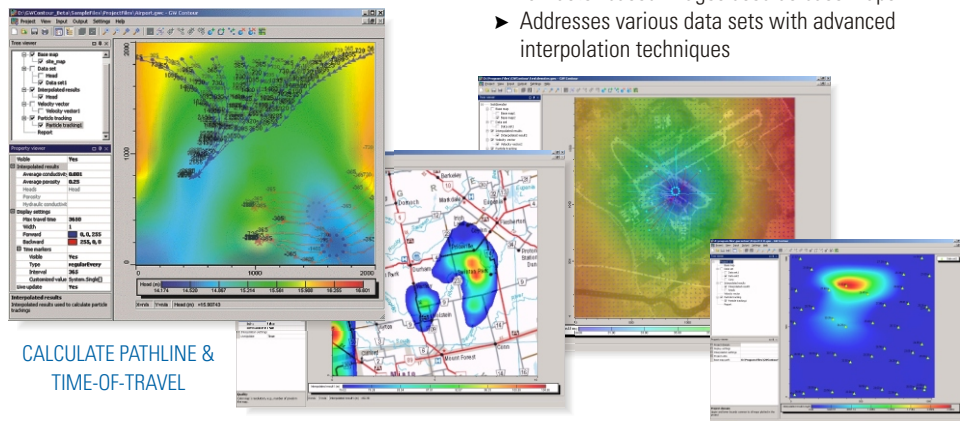
- ▶ Define number of velocity vector nodes per cell
- ▶ Select and display velocity vectors using custom, Web, or system color palettes
- ▶ Adjust velocity vector scales
- ▶ Display velocity vectors with magnitude
- ▶ Animate forward/backward particle movement
- ▶ Define the number of particles along a line, within a circle, or place individual particles
- ▶ Define custom time marker intervals
- ▶ Adjust forward or reverse pathline thickness
- ▶ Assign colors for forward and reverse pathlines
- ▶ Define the maximum travel times for particles

### Reporting

GW Contour includes a built-in reporting tool designed for creating an unlimited number of reports that display desired views of the project. In addition, users are able to create an unlimited number of custom report templates for future use.

**Documentation:** Includes a comprehensive User's Manual and a step-by-step tutorial to get you started fast!

**System Requirements:** Pentium II, 300MHz, 128 Mb RAM, SVGA monitor, Microsoft .NET Framework Version 1.1



CALCULATE PATHLINE & TIME-OF-TRAVEL

CONCENTRATION MAP WITH COLOR SHADING

### Pricing

GW Contour.....	US\$ 495 <sup>00</sup>
Single-User License	
5 User-License.....	US\$ 1,485 <sup>00</sup>
10 User-License.....	US\$ 2,475 <sup>00</sup>
Site License.....	Call Us

Educational & Government Rates Available!