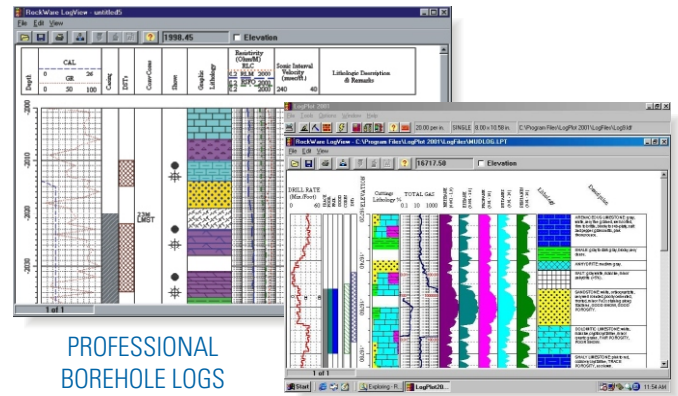


## Professional Applications

- ▶ Graphically reporting borehole data (blow counts, drill rates, concentration data, lithology, total gas, etc.)
- ▶ Reporting borehole data for mining companies (aggregates, metals)
- ▶ Displaying geophysical data (GPR, resistivity, sonic, LAS)
- ▶ Plotting load strength, rock hardness, RQD, etc.
- ▶ Identifying histograms of quartz veining, oxidation, and percentage minerals



PROFESSIONAL BOREHOLE LOGS

## Overview

LogPlot is used to display geotechnical, environmental, geophysical, mud/gas, and mining data as a graphical boring log. LogPlot offers almost unlimited flexibility for log layout via its easy-to-use, built-in Log Designer. With a point-and-click interface, LogPlot's Log Designer makes it easy to customize logs for different clients and projects.

## LogPlot Highlights

- ▶ Easy-to-use LogPlot Log Designer—point, click, and multiple-select capabilities.
- ▶ Tabbed spreadsheet windows in the LogPlot Data Editor make entering data a snap (includes tools for automatic depth intervals, arithmetic operations, data smoothing and filtering)
- ▶ Data import from LAS, Excel, RockWorks boreholes, ASCII, and DBF
- ▶ Data export to LAS and Excel
- ▶ Share a borehole log with clients and co-workers using the freely distributed LogView Program
- ▶ Export continuous logs to multiple file formats

## Three Simple Steps

### Step 1: Select a design from the LogPlot library or customize your own

#### Log Header and Footer Items:

- ▶ Logos (BMP, JPG, WMF, PCS, TGA, PNG or TIFF)
- ▶ Text and text boxes
- ▶ Line and rectangles
- ▶ Patterns and symbols

#### Log Body Items:

- ▶ Lithology patterns, symbols, descriptions and interbeds
- ▶ Cutting percentages
- ▶ Easily aligned horizontal and vertical text for point and interval data
- ▶ Scale bars showing elevation, depth and true vertical depth
- ▶ Customizable curves and bar graphs, including cross-plot curves
- ▶ Interval fillbars
- ▶ Stretchable and static symbols
- ▶ Detailed well construction diagrams
- ▶ Tadpole plots for fracture and bedding data

### Step 2: Enter your Data into the Data Editor

- ▶ Pick your lithology and well construction data from a customizable list of keywords
- ▶ Import data using the Window's clipboard, or directly from text tables, DBF database files, LAS files, Excel spreadsheets, or RockWorks BH files

### Step 3: Compile, display and distribute your well log

- ▶ Create logs at any vertical scale
- ▶ Compare logs side by side
- ▶ View depth or elevation for any point on the screen display
- ▶ Create hardcopy on any Windows compatible printer or plotter
- ▶ Use the free, distributed RockWare LogView program to distribute your well log
- ▶ Export logs in BMP, JPG, TIFF, PNG, WMF, and EMF for use in your reports and presentations
- ▶ Import your well log into RockWorks for display in cross-sections

#### New LogPlot Features:

- ▶ More macros (date, well location, elevation) for header and footer text
- ▶ Automatic curve, histogram, cross-plot name and value legends in the header and footer
- ▶ Images can be embedded or linked
- ▶ Fillbars can link to keywords or use a default fill
- ▶ Symbol column supports both vector and bitmap designs
- ▶ Tadpole plots display borehole structural information
- ▶ Interval Data can be displayed as text (centered vertically) or Bar Graphs
- ▶ True Depth Curve links to borehole survey data
- ▶ Design units are now inches or centimeters
- ▶ Log Design alignment tools: align along edges, and evenly space entities

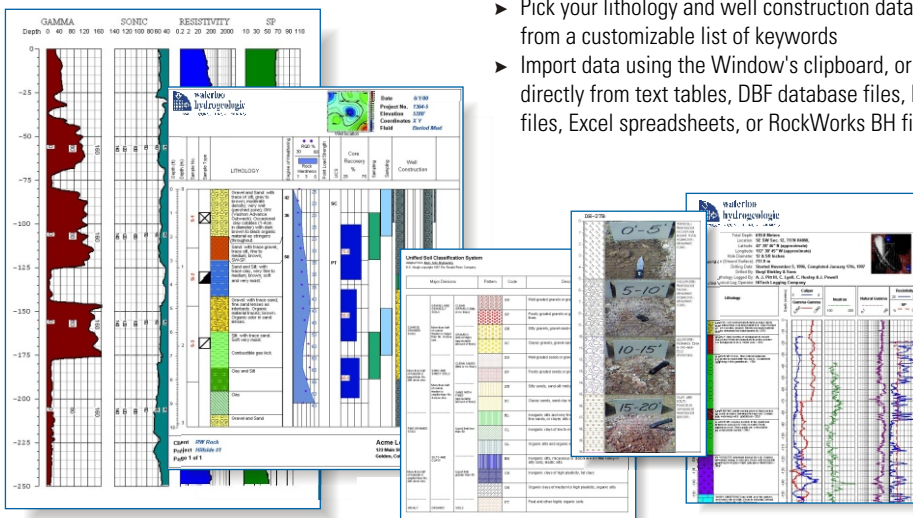
**Documentation:** LogPlot includes a comprehensive User's Manual and a step-by-step tutorial to get you started fast!

**System Requirements:** PC Pentium, 100MHz, 128 Mb RAM

## Pricing

LogPlot..... **US\$ 695<sup>00</sup>**  
Single-User License

Upgrades from..... **US\$ 199<sup>00</sup>**



GEOPHYSICAL PLOTS

LITHOLOGY PROFILES

PROFESSIONAL LOGS