



WHI Enews



**waterloo
hydrogeologic**
A Schlumberger Company

Water Solutions in Perspective

August 2006

In this edition...

Product News

- [Announcing the release of AquaChem v.5.1](#)
- [Managing Groundwater Monitoring Data with HydroGeo Analyst](#)

Consulting Services News

- [WHI Exhibiting at Workshops and Conferences Around the World](#)

Training News

- [Upcoming Environmental and Groundwater Modeling Courses](#)

Tips & Tricks

- [How to Update Older AquaChem Projects into AquaChem v.5.1!](#)

Hot off the press...

Waterloo Hydrogeologic Software Brochure!



[Download](#) the Waterloo Hydrogeologic Software Brochure!

Product News

Announcing the release of AquaChem v.5.1

AquaChem is specifically tailored for anyone working with water data, and is ideally suited for water projects requiring management, analysis, and reporting of their water quality data. AquaChem features a fully customizable database of physical and chemical parameters and provides a comprehensive selection of analysis, calculation, modeling, and graphing tools.

Why upgrade to version 5.1?

AquaChem version 5.1 now includes:

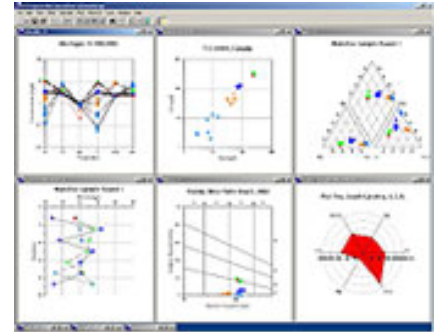
- Reliability check now contains Unit for each formula
- Enhanced Mann Kendall trend analysis and summary statistics
- Conveniently search for stations and samples that are located at a distance
- Built in tools such as the Langelier index and Ryznar Stability index for more convenience
- Now calculate oxygen solubility as a function of elevation and temperature
- Additional parameters have been mapped between AquaChem and PHREEQC
- Includes a new modeling feature: "Equilibrate with Minerals"
- Easily generate PH3TD input for [Visual MODFLOW](#) with confidence
- ...plus much [more](#)

SPECIAL PRICING OFFER

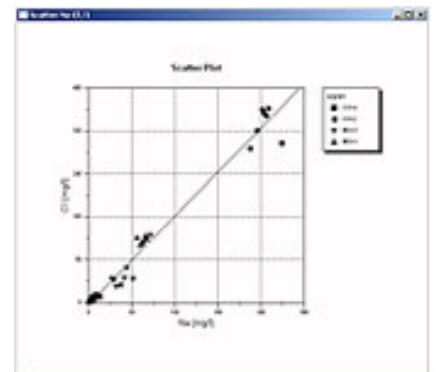
Pricing Options	ON SALE!	Effective Aug. 15th
Upgrade from v.3.x to 5.1	\$495.00	\$595.00
Upgrade from v.4.0 to v.5.1	\$395.00	\$495.00
Software Maintenance	\$295.00	\$395.00
Additional license for the same office*	\$596.25	\$708.25

*Offer only available if directly purchased through WHI

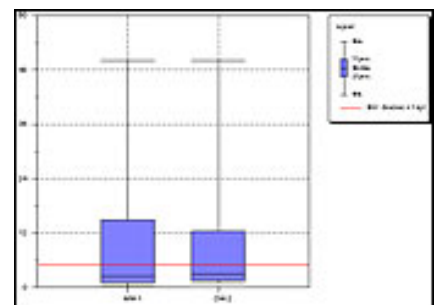
Upgrade to version 5.1 Today!
From only **US\$ 395.00**



Multi-plot view



Scatter Plot



Box & Whisker Plot


Download a FREE Demo Today!

[Download the AquaChem 5.1 Demo Today!](#)

For more information, contact us:

Phone: +1-519-746-1798

Email: sws-sales@slb.com

Website: http://www.waterloohydrogeologic.com/software/aquachem/aquachem_whats_new_5.htm

TOP

Managing Groundwater Monitoring Data with HydroGeo Analyst

[HydroGeo Analyst](#) is the most advanced environmental database solution available in the market today! This all-in one solution integrates a complete range of easy-to-use analysis and reporting tools, with a powerful yet extremely flexible database.

HydroGeo Analyst is ideal for a wide range of specializations requiring data collection, management, visualization, and reporting. Advanced features now allow users to:

- Import water level, temperature, and conductivity* values directly from Diver dataloggers into HydroGeo Analyst for compliance reporting.
- Map and contour water level data using the built-in GIS Map Manager.
- Visualize water elevations as variable 3D surfaces with color shading and contour lines.
- Manage large amounts of groundwater monitoring data for your site within a single, easy-to-use program.
- Simultaneously view geologic features and Diver data for improved understanding of your site.
- Geographically locate and manage groundwater monitoring networks.

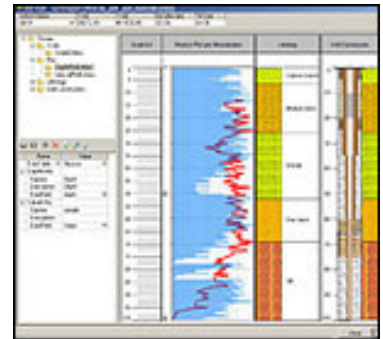
HydroGeo Analyst and Diver dataloggers offer the ideal combination of data management and data acquisition capabilities!

* - available with CTD-Diver only

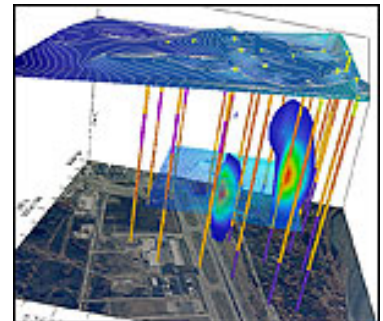
HydroGeo Analyst Brochure & Demo

Demo: [Click here](#) to download a free trial!

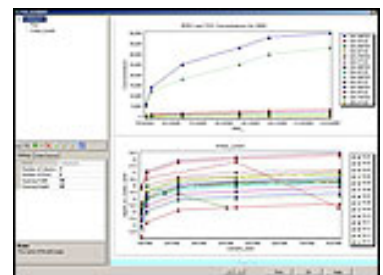
Brochure: [Click here](#) to download brochure!



Analysis and Interpretation



3D Interpolation



Time Series Data: Diver Water Elevations

For more information, contact us:
Phone: +1-519-746-1798
Email: sws-sales@slb.com
Website: [Visit our HydroGeo Analyst web page](#)

TOP

Consulting Services News

SWS Exhibiting at Workshops & Conferences Around the World

Waterloo Hydrogeologic will be exhibiting our services at a number of upcoming conferences and workshops throughout Canada and USA. Our hydrogeologists and engineers will be attending these events and we would like to meet you and demonstrate our advanced monitoring service, software tools and discuss our full suite of services.

Upcoming Events

- **Groundwater Monitoring Services Workshop**

Dates & Location: September 21st, 2006 8:00am-5:00pm
Waterloo, Ontario Canada

Join us for an informative, hands-on workshop showcasing Diver dataloggers and integration into Waterloo Hydrogeological Software. Please visit our website for more information and how to register.

Registration is free, however space is limited. [Reserve](#) your spot today!

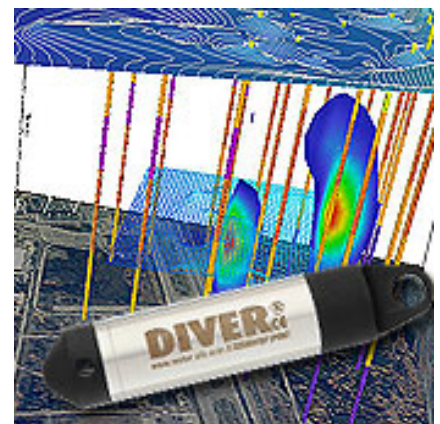
Location:

Waterloo Inn
475 King Street North
Waterloo, ON N2J 2Z5
Canada

- **Oilfield Technology for Water Applications**

Dates & Location: November 2nd, 2006 - Kitchener, Ontario Canada

Join us for an informative session on the economic advantages of using high resolution geophysical technology in exploration, development and characterization of aquifers. For the most part, the technologies will have been initially developed for use in oil field applications. **Registration is free**, however space is limited. [Reserve](#) your spot today!



Integrate your field data into our complete suite of software solutions!



Workshops and seminars designed for hands-on learning.

The different types of technologies will be outlined in order to:

- provide an overview of the equipment and instrumentation hardware required
- show the transition from oil to water applications
- provide case studies of application in water problems (supply, dewatering, oil & gas extraction, aquifer contamination etc)
- demonstrate the dollar advantage with regard to the economics of water production and the benefits related to reducing risk and uncertainty in decision-making.



[Learn more about WHI's Consulting Services on the WHI website!](#)

Attendees will come away understanding of the suite of technologies available for such an application, the economic advantages and will know the companies that have the experience and expertise in their application.

Location:

Holiday inn
Kitchener-Waterloo Conf. Ctr.
30 Fairway Road South at Hwy 8
Kitchener, ON N2A 2N2
Canada

For more information, please contact:

Phone: +1-519-746-1798

Email: sws-services@slb.com

Website: www.waterloohydrogeologic.com/consulting/consulting_services.htm

TOP

Training News

Environmental and Groundwater Modeling Course Line-Up

The 2006 Waterloo Hydrogeologic Open Enrollment schedule is in full swing! The following list of courses will be offered over the next six months.

Can't make it to one of our Open Enrollment Courses? Call us about our On-Site Custom Courses designed to suit your specific needs!

[Request your free 2006 Training Course Schedule Catalog!](#)

[Get our full 2006 training schedule!](#)



TOP

Groundwater Modeling for Mine Applications (Aug. 22-25)

Site Characterization, Geochemistry, Groundwater Flow and Solute Transport

An environmental assessment of mining activities requires the analysis of groundwater quantity and quality, the impact of dewatering operations, the potential impact of mine waste leachate, and the potential for remediation of any contaminant issues. This course investigates the use of several groundwater modeling tools that may help in the design, operation and closure of mine sites, including AquiferTest, Hydrogeo Analyst, AquaChem and Visual MODFLOW through lectures and hands-on exercises.

Details:

Registration: www.waterloohydrogeologic.com/training/training_course_registration_us.htm

Applied Groundwater Flow and Contaminant Transport Modeling (Sept. 12-15)

Theory and hands-on applications using MODFLOW-2000, MODPATH, MT3D and WinPEST

This 4-day course was designed to present the theory behind groundwater flow and contaminant transport modeling, and the practical application of Visual MODFLOW for developing simple to complex groundwater models. Lectures alternate with hands-on computer exercises to emphasize practical development of real-world modeling solutions.

Learn more about this course:

Details: www.waterloohydrogeologic.com/training/groundwater_training_course_aftm.htm

Registration: www.waterloohydrogeologic.com/training/training_course_registration_us.htm

TOP

Finite Element Groundwater Modeling (Sept. 19-22)

Advanced Applications for Sat/Unsat Flow & Transport, Density-Dependent Flow and Heat Transport using FEFLOW

This 4-day course presents the theory behind the Finite Element method for groundwater modeling, and its practical application using FEFLOW. This course provides a more complete understanding of the use finite elements in groundwater modeling, and includes such topics as groundwater flow and transport modeling, principles of unsaturated flow, fracture flow modeling, thermal transport, and density-dependent flow modeling.

Learn more about this course:

Details: http://www.waterloohydrogeologic.com/training/groundwater_training_course_fem.htm

Registration: www.waterloohydrogeologic.com/training/training_course_registration_us.htm

TOP

Water Quality Data Management & Modeling (Sept 26-28)

Theory and Applications using AquaChem and USGS PHREEQC

The large quantity and range of water quality data types presents a challenge to environmental professionals who wish to develop a comprehensive interpretation of this data. This course provides hands-on experience in temporal and spatial water quality data interpretation, including the use of convenient computer software for organizing and plotting the data.

Learn more about this course:

Details: https://www.waterloohydrogeologic.com/training/groundwater_training_course_WQDM.htm

Registration: www.waterloohydrogeologic.com/training/training_course_registration_us.htm

TOP

Tips & Tricks

How to Update Older AquaChem Projects into AquaChem v.5.1!

With the highly anticipated release of AquaChem v.5.1 we wanted to review the process of updating older projects created in previous versions of AquaChem. We do recommend you always create a backup of your older project before opening the project in the new version. AquaChem v.5.1 is backwards compatible, and is able to open any project created in versions 4.0 and 5.0. When opening projects created in versions 4.0 and 5.0 in AquaChem 5.1 simply select the command: File > Open. Then browse to your *.aqc project file to open the dataset. At this time, you will have the option to create a backup copy of your database, which is highly recommended. Please be aware that AquaChem 5.1 no longer supports opening projects from v3.X due to changes in the data structure. To open a database created in v.3.X in AquaChem v.5.1 you will need to do the following:

1. Open the database in AquaChem v.3.X
2. Export the project to a text file (*.txt) using the command: File > Export ASCII
3. Close AquaChem v.3.X (ensure you have a backup of this project)
4. Open AquaChem v.5.1
5. Create a New database
6. Use the command: File > Import to load the dataset

We hope you enjoy working with the many new features included in this version of AquaChem! For a complete listing of the new features, please open the 'Read Me' file placed on your desktop during the installation of AquaChem 5.1. If you have any further questions or concerns please feel free to contact Technical Support Services.

For more information, please contact:

Phone: +1-519-746-1798

Email: sws-support@slb.com

Website: www.waterloohydrogeologic.com/support.htm

TOP

Thank you for reading Water Solutions in Perspective.

For more information about Waterloo Hydrogeologic, please visit: www.waterloohydrogeologic.com



Waterloo Hydrogeologic, Inc.
A Schlumberger Company
460 Phillip Street, Suite 101
Waterloo, Ontario
Canada N2L 5J2

Phone: 519-746-1798
Fax: 519-885-5262
sws-info@slb.com
www.waterloohydrogeologic.com

Your subscription: The preceding message was sent to you as a service by Waterloo Hydrogeologic. If you do not wish to receive future editions of this newsletter, please reply to this message with the word 'Remove' in the subject line.

Can't see the images? If your Outlook email client does not automatically download the images in this newsletter, complete the following instructions to identify the domain from which this newsletter is sent as "safe".

1. On your Outlook menu bar, go to: Actions > Junk E-Mail > Add Sender's Domain to Safe Sender's List.
2. After adding the "waterloohydrogeologic.com" domain, go to Tools > Options > Security tab > Download Pictures section > Change Automatic Download Settings button.
3. Select "Permit downloads in e-mail messages from senders and to recipients defined in the Safe Senders and Safe Recipients Lists used by the Junk E-mail filter."

Copyright© 2006 Waterloo Hydrogeologic, Inc. - A Schlumberger Company. All Rights Reserved.