



SWS Enews



Water Solutions in Perspective

June 2007

In this edition...

Product News

- [Increase Your Productivity and Save](#)
- [Schlumberger Water Services is Proud to Partner with Pine Environmental Services Inc.](#)

Consulting Services News

- [Monitoring for Groundwater Characterization in the Netherlands](#)
- [SWS Exhibiting at Workshops & Conferences Around the World](#)

Training News

- [Upcoming Environmental & Groundwater Modeling Courses](#)

Tips & Tricks

- [Assigning Symbols in AquaChem v5.1](#)



**Educational
Software Packs
Supporting Environmental
Education**

Exclusive Educational Packs provide user's with a complete set of tools
[Learn more!](#)

Product News

Now is the time to increase your productivity and save – for a limited time!

Are you finding that keeping up to date with current groundwater and environmental software a challenge?

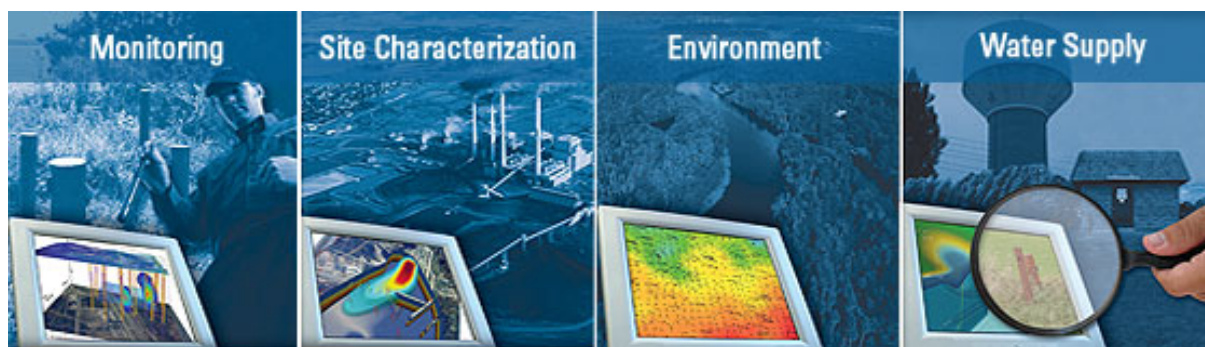
Do you need a suite of software programs that will give you the competitive edge and deliver your projects?

Groundwater professionals around the world rely on our complete range of software programs to give them the competitive edge and produce results. We are pleased to offer you generous savings on our industry-recognized software products, engineered to increase your productivity and deliver results!

Purchase your software today and receive:

- Immediate cost-savings, for a limited time only
- Software designed with time-saving features groundwater professionals demand
- Immediate access to the tools necessary for expanding the scope of your groundwater projects
- Programs that offer the ability to generate rapid and accurate results

For a Limited Time, Save 10% on our Software packages!



Until June 27th, we are pleased to offer you 10% off the regular price of our most popular software. If you have been considering purchasing one or more of these programs, this is the ideal time to take advantage of this limited time offer. **To order, complete the ORDER FORM, and fax it to us at 519-885-5262, or call and reference promo code SWS0627 today!**

Product	Reg. Price	Sale Price
AquaChem	\$995.00	\$895.50
AquiferTest	\$795.00	\$715.50
AquiferTest Pro	\$995.00	\$895.50
FEFLOW®*	€990.00	€890.00
GW Contour	\$495.00	\$445.50
HydroGeo Analyst	\$5495.00	\$4945.50
UnSat Suite	\$895.00	\$805.50
UnSat Suite Plus	\$1495.00	\$1345.00
Visual HELP	\$995.00	\$895.50
Visual MODFLOW	\$1295.00	\$1165.50
Visual MODFLOW Pro	\$2995.00	\$2695.50
Visual MODFLOW Premium	\$3995.00	\$3595.50
Visual PEST-ASP	\$795.00	\$715.50

Government agencies click [here](#) for your special discount rates!

Educational institutions click [here](#) for your special discount rates!

*FEFLOW is a registered trademark of WASY GmbH.

Order your Waterloo Hydrogeologic Software by June 27th and save!

[Download](#) our Field to Office Order Form today!

[Download](#) our Field to Office brochure today!



Fill out our [online form](#) to receive your complimentary Field to Office Solutions DVD-ROM!

For more information, contact us:

Phone: +1-519-746-1798

Email: sws-sales@slb.com

Website: http://www.waterloohydrogeologic.com/software/software_main.htm

TOP

Schlumberger Water Services is Proud to Partner with Pine Environmental Services Inc.

Pine Environmental Services Inc. was started in 1995 by two brothers, Angelo and Roger Pinheiro, (the English translation of Pinheiro is Pine) who recognized the overwhelming need for customer support and service within the growing environmental monitoring and field Equipment industry.

Since 2006, Pine Environmental has been committed to growing the Diver datalogger brand through their chain of locations within North America. Pine's commitment to customer satisfaction and technical support provides clients with the expertise needed to assist them in all of their environmental needs.



For more information, contact us:

Phone: +1-519-746-1798

Email: sws-diver@slb.com

Website: http://www.waterloohydrogeologic.com/equipment/groundwater_dataloggers.htm

TOP

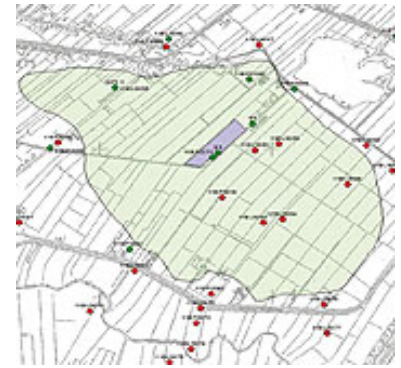
Consulting Services News

Monitoring for Groundwater Characterization in the Netherlands

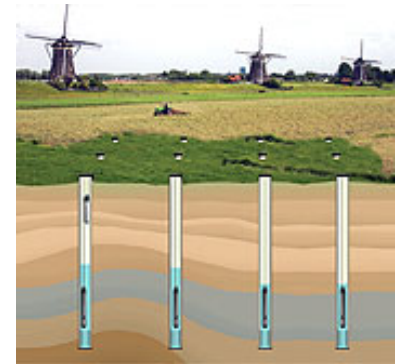
The Netherlands is considered a low-lying country with very small changes in elevations throughout. Groundwater levels in the majority of the country are less than 5 meters below the surface. Heavily industrialized and with land used predominantly for agricultural activities, the Netherlands has an extensive network of monitoring wells in place to monitor the effects of water extraction and to manage groundwater resources. The country has 11 water supply companies. Each company is responsible for measuring the water levels of their designated monitoring wells on a bi-weekly basis, as part of the licensing agreement issued by the province. These measurements were registered manually at each monitoring well by company staff or volunteers. The data is then submitted digitally or in writing to NITG-TNO, the national groundwater database, where groundwater levels and subsequent effects are stored nation-wide.

Vitens, the largest water supply company in the Netherlands, started an investigation to identify alternatives for this labor intensive and costly way of collecting data. Vitens has had past experience using Schlumberger Water Services' (SWS) Diver dataloggers on the island of Vlieland, a project developed to optimize the collection of groundwater data.

[Click here](#) to read the complete case study.



Map of the site showing a monitoring network including monitoring wells



Cross-section of monitoring network

SWS Exhibiting at Workshops & Conferences Around the World

Upcoming Events:

- [AWWA ACE Convention 2007](#)
Dates: June 24-28, 2007
Location: Toronto, ON, Canada
- [2nd International Oil and Gas Congress](#)
Dates: June 27-30, 2007
Location: Veracruz, Mexico

Upcoming Workshops:

- [Register Today](#)
Dates: June 25, 2007
Location: Merida, Yucatan
- [Register Today](#)
Dates: June 27, 2007
Location: Mexico City



[Learn more about our Consulting Services!](#)

For more information, please contact:

Phone: +1-519-746-1798

Email: sws-services@slb.com

Website: www.waterloohydrogeologic.com/consulting/consulting_services.htm

Environmental and Groundwater Modeling Course Line-Up

Schlumberger Water Services has finalized its calendar of training course locations and dates for 2007. We will be offering a full suite of Professional Short Courses on topics ranging from groundwater modeling using finite difference (Visual MODFLOW) and finite element (FEFLOW), to GIS data management for environmental professionals, aquifer performance test analysis, water quality data management, contaminated site risk assessment and regulatory review of hydrogeology studies. We will also be offering some specific customized courses that were tailored to meet the needs of specific industry sectors. As in other years, we will be offering all of our standard SWS "Open Enrolment" courses at our training facilities in Waterloo, Ontario, Canada as well as at various selected venues around the world.

If you are interested in one of our courses, or if you would like to discuss a customized "On-site Training Course", simply contact our Training Department at sws-training@slb.com and we will work with you to develop a course that provides the content, topics, laboratory exercises and software that you require.

Can't make it to one of our Open Enrollment Courses? Call us about our [On-Site Custom](#) Courses designed to suit your specific needs!



[Download our 2007 Training Course Schedule!](#)

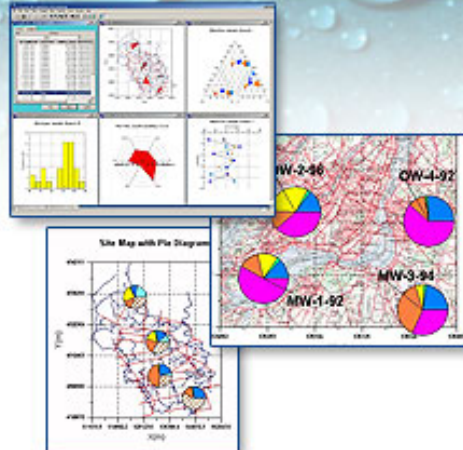
TRAINING COURSE SPOTLIGHT!

Water Quality Data Management & Modeling

Applications using AquaChem and USGS PHREEQC



This 3-day course is designed to give water professionals hands-on experience applying AquaChem to projects requiring geochemical data interpretation and management of water data.



Course Details: [Visit our website for more details](#)

Registration: [Register online today!](#)

COUPLED GEOCHEMICAL & TRANSPORT MODELING COURSE

August 6-10, 2007, Colorado

The course is designed to introduce the participants to the model-based quantification of a wide range of water quality problems from various industries and disciplines, e.g., contaminant hydrology, mining and water supply

Taking this short course will help groundwater practitioners:

- Understand the basics of coupled geochemical transport modeling.
- Learn how to apply state-of-the-art models to real-world water quality problems.
- Apply the theoretical framework with hands-on experience in the computer lab.
- Use the modeling tools MODFLOW, MT3DMS, PHREEQC-2 and PHT3D (which couples MT3DMS and PHREEQC-2).
- Approximately half the time of the course is devoted to computer labs. Simplified exercises that are based on real-world problems will help participants to translate theory into practice.

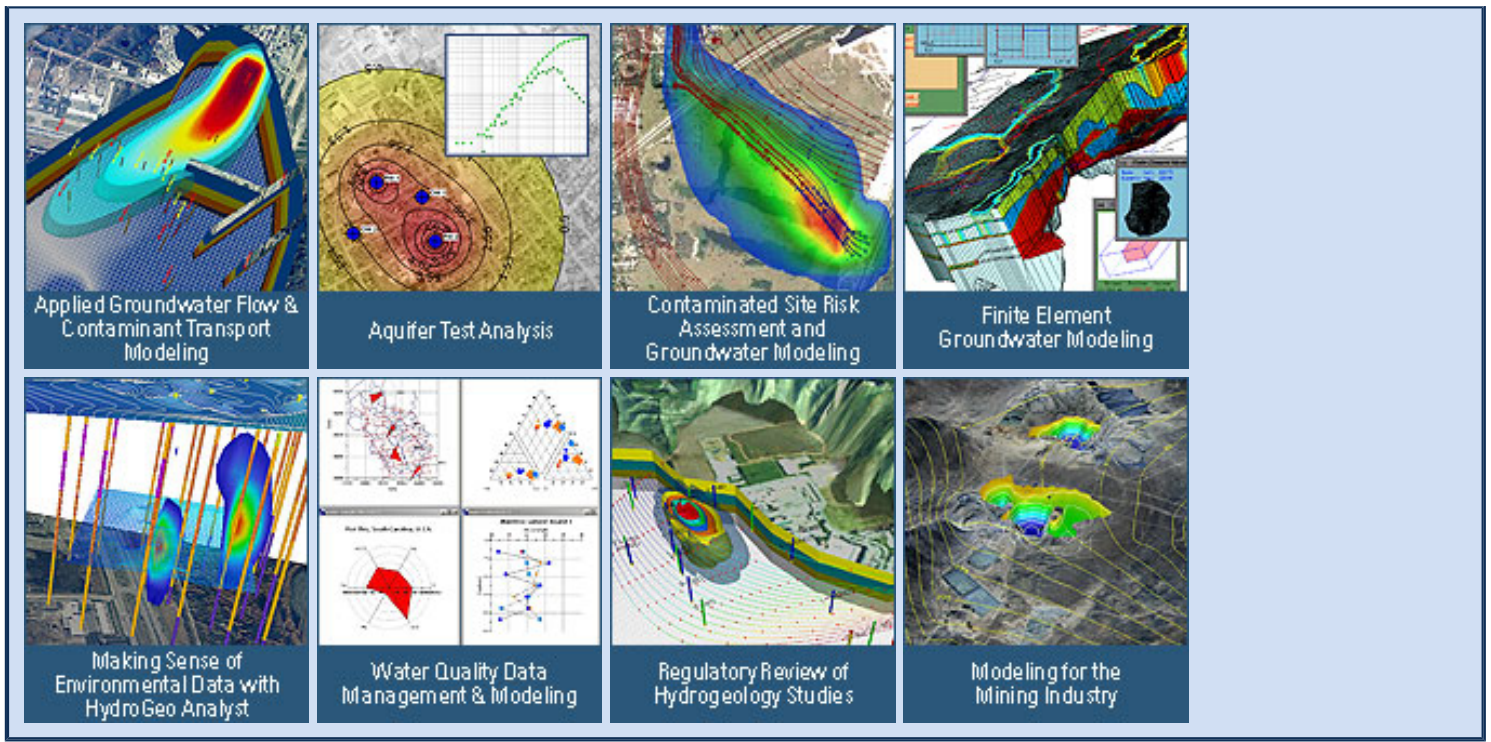
International Groundwater Modeling Center

Phone: +1 303 273-3103

Fax: +1 303 384-2037

Email: igwmc@mines.edu

OTHER POPULAR COURSES OFFERED AROUND THE WORLD...



TOP

Tips & Tricks

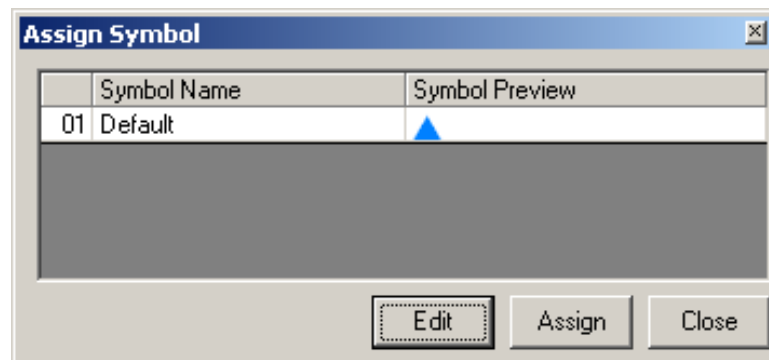
Assigning Symbols in AquaChem v5.1

In [AquaChem](#) version 5.1, symbols and symbol groups can be assigned for display on plots. This allows multiple symbol groups to be created for each site. However, symbols can be assigned based on geology, aquifer body, or other database parameters. In the example below, we will create a symbol group based on the sample ID to display a different symbol for every sample within the AquaChem database.

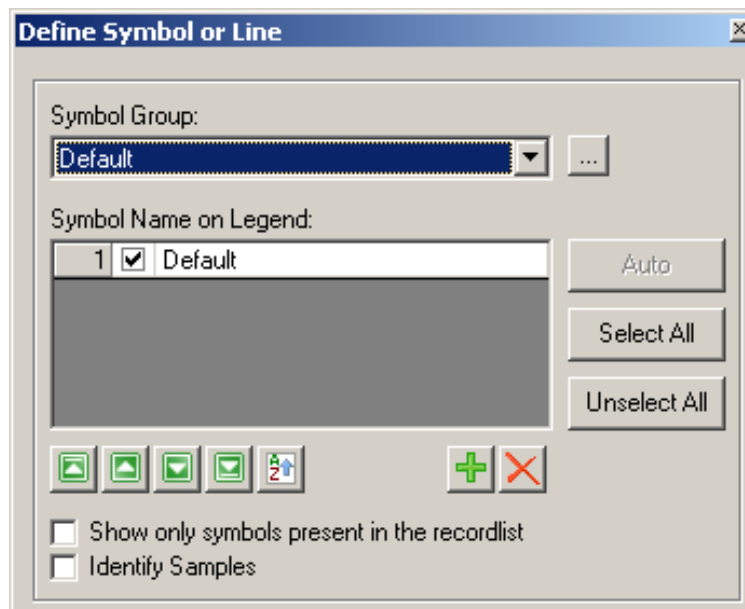
Please follow the steps below to modify the .MON file to allow this information to be easily imported into Visual MODFLOW

To create a new symbol group you must be viewing the Sample list with at least one sample selected. From the top tool bar select Samples>Assign Symbol.

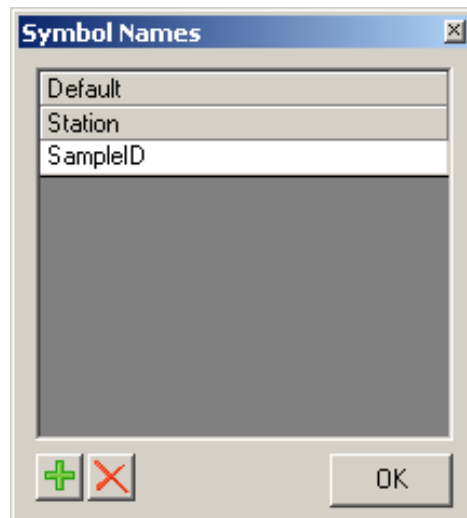
The Assign Symbol dialogue will appear and provide a list of the available symbol names and corresponding symbols.



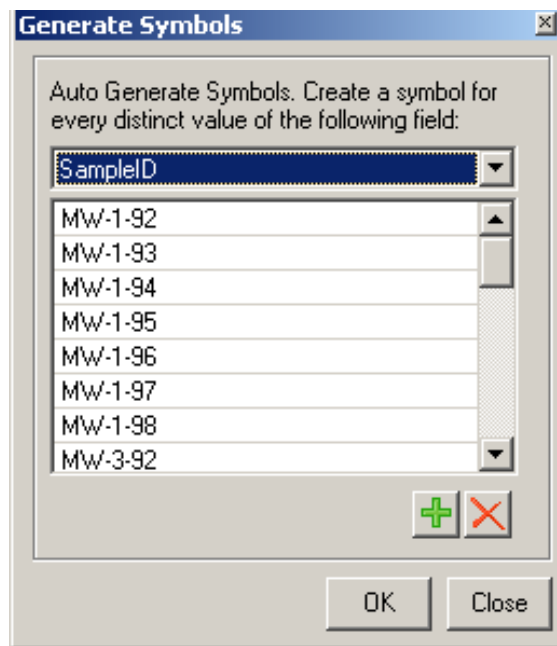
To edit the symbol options, press the edit button. This will load the Define Symbol or Line dialogue



To create a new symbol group, click the [...] button beside the Symbol Group combo box. In the Symbol Names dialogue, click on the '+' to add a new symbol group and enter the group name, then click 'OK'.

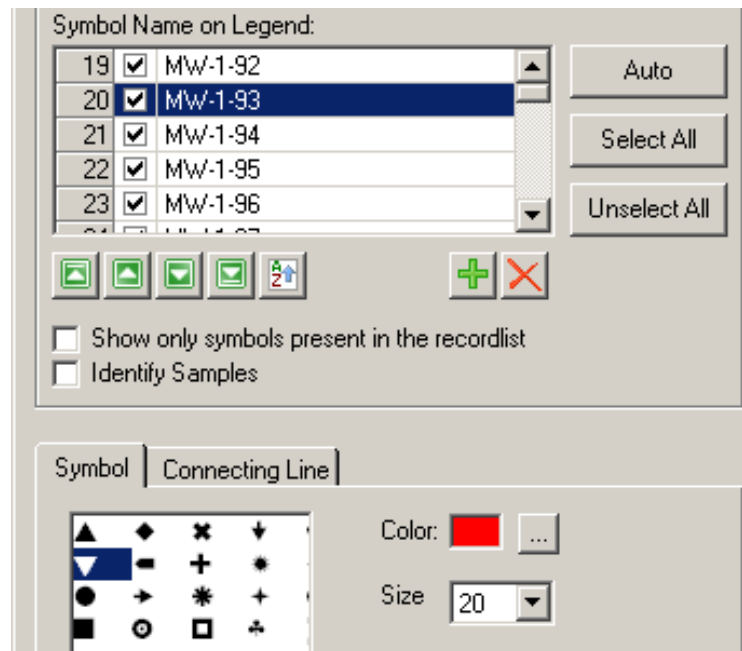


Choose the new symbol group from the combo box and select the 'Auto' button to auto generate the symbols based on the database parameters.

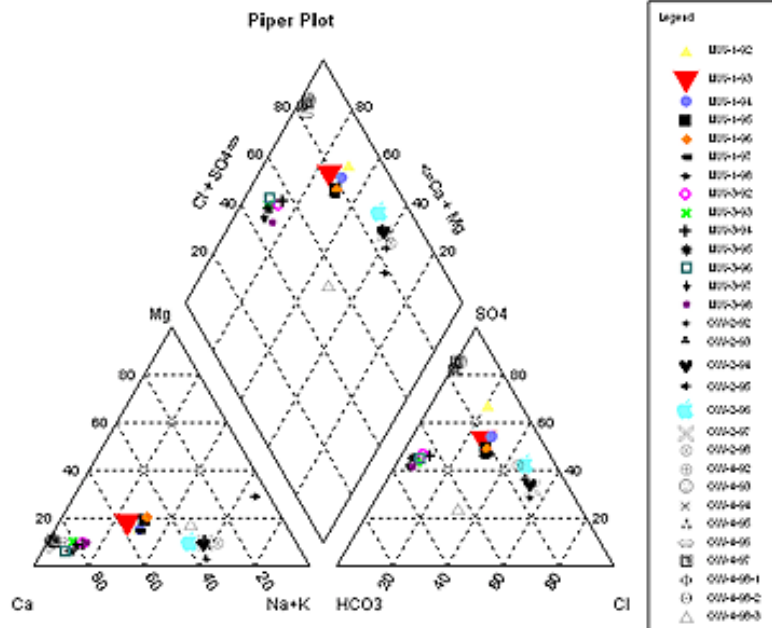


You may also add and remove symbols to the symbol group manually.

Once the symbols have been added to the symbol group, the symbol properties of colour, size and shape, can be modified. The samples in the list with the check mark beside them are active; as a result, the samples associated with these symbols will be displayed on the open plots.



Once the appropriate symbols have been selected, apply the changes and close the dialogue boxes until returned to the sample list. Now, when creating a plot, a different symbol will be associated with each sample ID.



For further information regarding assigning symbols in AquaChem v5.1, please visit the Visual FAQ on our [website](#).

For more information, please contact:

Phone: +1-519-746-1798

Email: sws-support@slb.com

Website: www.waterloohydrogeologic.com/support.htm

TOP

Thank you for reading Water Solutions in Perspective.

For more information about Waterloo Hydrogeologic, please visit: www.waterloohydrogeologic.com



Waterloo Hydrogeologic, Inc.
 A Schlumberger Company
 460 Phillip Street, Suite 101
 Waterloo, Ontario
 Canada N2L 5J2

Phone: 519-746-1798
 Fax: 519-885-5262
sws-info@slb.com
www.waterloohydrogeologic.com

Your subscription: The preceding message was sent to you as a service by Waterloo Hydrogeologic. If you do not wish to receive future editions of this newsletter, please reply to this message with the word 'Remove' in the subject line.

Can't see the images? If your Outlook email client does not automatically download the images in this newsletter, complete the following instructions to identify the domain from which this newsletter is sent as "safe".

1. On your Outlook menu bar, go to: Actions > Junk E-Mail > Add Sender's Domain to Safe Sender's List.
2. After adding the "waterloohydrogeologic.com" domain, go to Tools > Options > Security tab > Download Pictures section > Change Automatic Download Settings button.
3. Select "Permit downloads in e-mail messages from senders and to recipients defined in the Safe Senders and Safe Recipients Lists used by the Junk E-mail filter."

