



# SWS Enews



Water Solutions in Perspective

September 2007

## In this edition...

### Product News

- [Protecting Groundwater Resources](#)
- [Expand Your Coastal Zone Aquifer Management Pack to the Field](#)

### Consulting Services News

- [Hydrogeologic Impact Analysis at Acton Ontario Quarry](#)
- [SWS Exhibiting at Workshops & Conferences Around the World](#)

### Training News

- [Upcoming Environmental & Groundwater Modeling Courses](#)

### Tips & Tricks

- [Importing Diver Data .MON Files into HGA 4.0](#)

**HydroGeo Analyst 4.0**  
**Now Released!**

The complete groundwater and borehole data management, analysis and visualization solution!

[Learn more about HydroGeo Analyst 4.0!](#)

## Product News

### Protecting Groundwater Resources

**Do you manage coastal zone aquifer projects?**

**Do you perform aquifer characterization and vulnerability assessments?**

Schlumberger Water Services (SWS) has packaged several software programs used by groundwater professionals who manage and protect coastal zone groundwater supplies or investigate impacts from over pumping. Each of the programs included in the Coastal Zone Aquifer Management Pack are designed with the features you need to deliver viable options for completing the various stages of coastal zone groundwater projects, including subsurface characterization, advanced data management, analysis and visualization solutions, in order to better understand the coastal aquifer behavior and select the best approach for optimizing water supply. The Coastal Zone Aquifer Management Pack includes industry-recognized software including [HydroGeo Analyst](#), [Visual MODFLOW Premium](#), and [AquiferTest Pro](#).

**For more information on how the Coastal Zone Aquifer Management Pack**

can help you with your groundwater management project, [click here](#).



Get your copy of our interactive DVD, featuring in-depth information, links, software demos, and much more. [Click here](#) to request your copy.

For more information, contact us:

Phone: +1-519-746-1798

Email: [sws-sales@slb.com](mailto:sws-sales@slb.com)

Website: [http://www.waterloohydrogeologic.com/software/software\\_main.htm](http://www.waterloohydrogeologic.com/software/software_main.htm)

TOP

**Expand Your Coastal Zone Aquifer Management Pack to the Field**

**Start your projects with a strong foundation.  
Get the data you need.**

Our complete line of Diver dataloggers represents the latest innovation in groundwater monitoring, offering high-quality and long-term reliability - in our most compact and robust housing ever! Diver dataloggers compliment our complete suite of Waterloo Hydrogeologic Software (WHS), and will help you make the most of your data.

- [Micro-Diver](#)
- [Mini-Diver](#)
- [CTD-Diver](#)
- [Cera-Diver](#)

For more information, contact us:

Phone: +1-519-746-1798

Email: [sws-sales@slb.com](mailto:sws-sales@slb.com)

Website: [http://www.waterloohydrogeologic.com/equipment/groundwater\\_dataloggers.htm](http://www.waterloohydrogeologic.com/equipment/groundwater_dataloggers.htm)



The latest generation of Diver groundwater monitoring dataloggers

TOP

## Consulting Services News

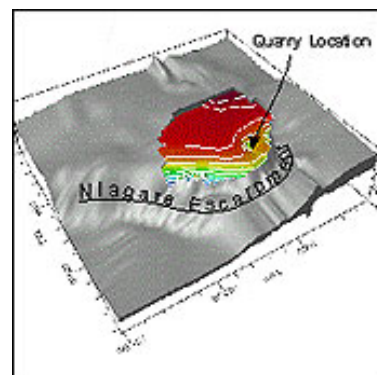
### Hydrogeologic Impact Analysis at Acton Ontario Quarry

The quarry in this study is located in Acton, Ontario, just 50km northwest of the metropolitan area of Toronto. Established in 1962, it is considered to be the 6th largest quarry in Canada by production, reaching targets of 340,000 tones of crushed stone per month. In 1999, Blue Circle Aggregates retained the services of Schlumberger Water Services to develop and apply a groundwater flow model for the evaluation of a variety of aggregate extraction scenarios and the potential impact these could have on the natural groundwater flow system surrounding the existing quarry. In this investigation, evaluating the level of drawdown that would occur during the various extraction scenarios and how it will impact groundwater conditions in the area can be challenging. Developing an understanding of the geologic and hydrogeologic conditions of the investigation site will reduce the uncertainty of future quarry developments.

To read more about this case study [click here](#).



Aggregate recovery at the Acton Quarry



3D Model of the Quarry

# SWS Exhibiting at Workshops & Conferences Around the World

## Upcoming Events

- **Fitabes 2007 - VII International Environmental Sanitation Technology Exhibition**  
**Dates:** September 3-7, 2007  
**Location:** Av. Amazonas, 6020 - Gameleira - Belo Horizonte - Minas Gerais
- **Monitoring Services Workshop**  
**Dates:** September 27th, 2007  
**Location:** Waterloo, Ontario Canada
- **Monitoring Services Workshop**  
**Dates:** September 28th, 2007  
**Location:** Ottawa, Ontario Canada



[Learn more about our Consulting Services!](#)

For more information, please contact:

Phone: +1-519-746-1798

Email: [sws-services@slb.com](mailto:sws-services@slb.com)

Website: [www.waterloohydrogeologic.com/consulting/consulting\\_services.htm](http://www.waterloohydrogeologic.com/consulting/consulting_services.htm)

TOP

## Training News

### Environmental and Groundwater Modeling Course Line-Up

Schlumberger Water Services has finalized its calendar of training course locations and dates for 2007. We will be offering a full suite of Professional Short Courses on topics ranging from groundwater modeling using finite difference (Visual MODFLOW) and finite element (FEFLOW), to GIS data management for environmental professionals, aquifer performance test analysis, water quality data management, contaminated site risk assessment and regulatory review of hydrogeology studies. We will also be offering some specific customized courses that were tailored to meet the needs of specific industry sectors. As in other years, we will be offering all of our standard SWS "Open Enrolment" courses at our training facilities in Waterloo, Ontario, Canada as well as at various selected venues around the world.

If you are interested in one of our courses, or if you would like to discuss a customized "On-site Training Course", simply contact our Training Department at [sws-training@slb.com](mailto:sws-training@slb.com) and we will work with you to develop a course that provides the content, topics, laboratory exercises and software that you require.

Can't make it to one of our Open Enrollment Courses? Call us about our [On-Site Custom](#) Courses designed to suit your specific needs!



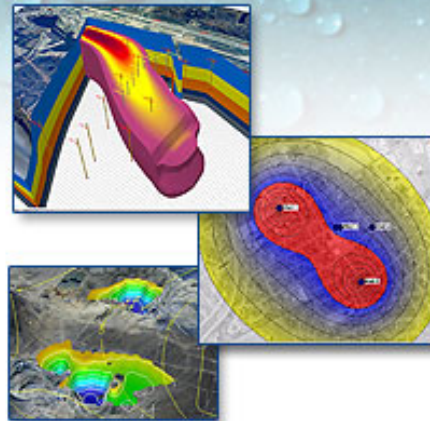
**TRAINING COURSE SPOTLIGHT!**

# Modeling for the Mining Industry

Site Characterization, Geochemistry, Groundwater Flow and Solute Transport



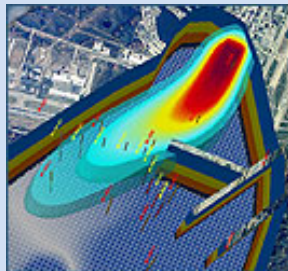
**This 4-day modeling course was designed to present the theory behind site characterization, database management, water quality data analysis, and groundwater flow and solute transport modeling for mine site assessment.**



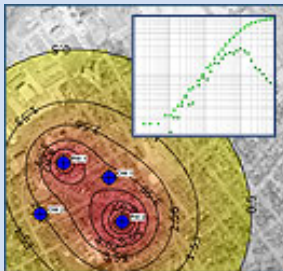
Course Details: [Visit our website for more details](#)

Registration: [Register online today!](#)

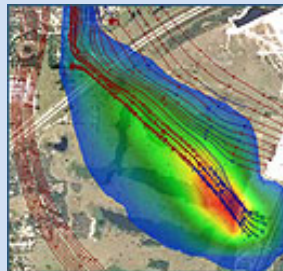
**OTHER POPULAR COURSES OFFERED AROUND THE WORLD...**



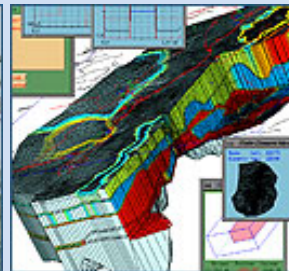
Applied Groundwater Flow & Contaminant Transport Modeling



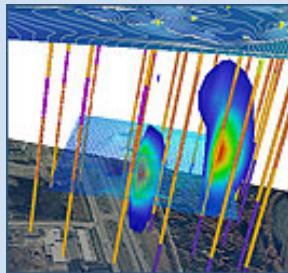
Aquifer Test Analysis



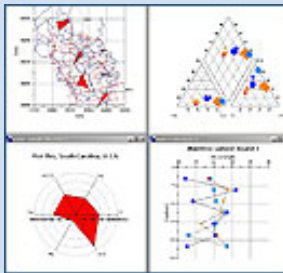
Contaminated Site Risk Assessment and Groundwater Modeling



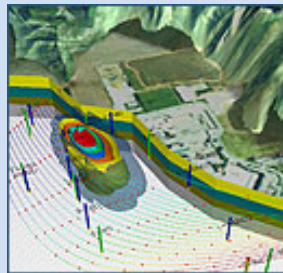
Finite Element Groundwater Modeling



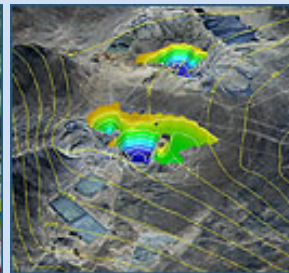
Making Sense of Environmental Data with HydroGeo Analyst



Water Quality Data Management & Modeling



Regulatory Review of Hydrogeology Studies

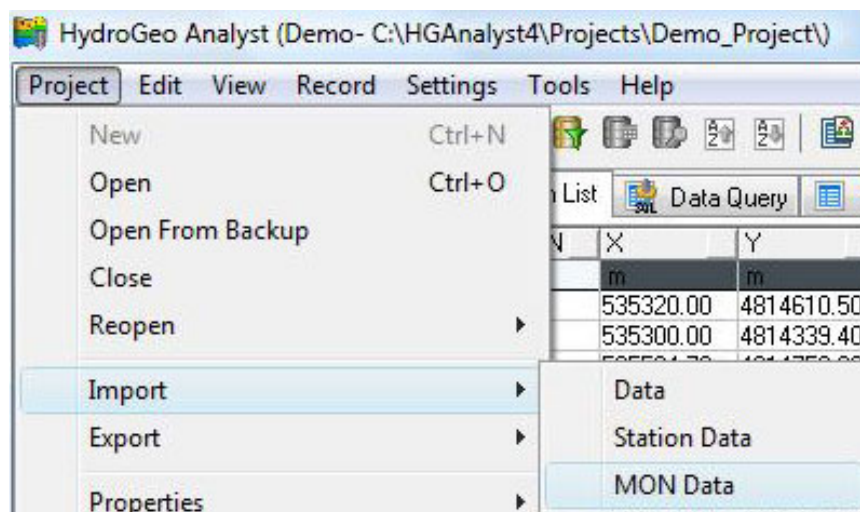


Modeling for the Mining Industry

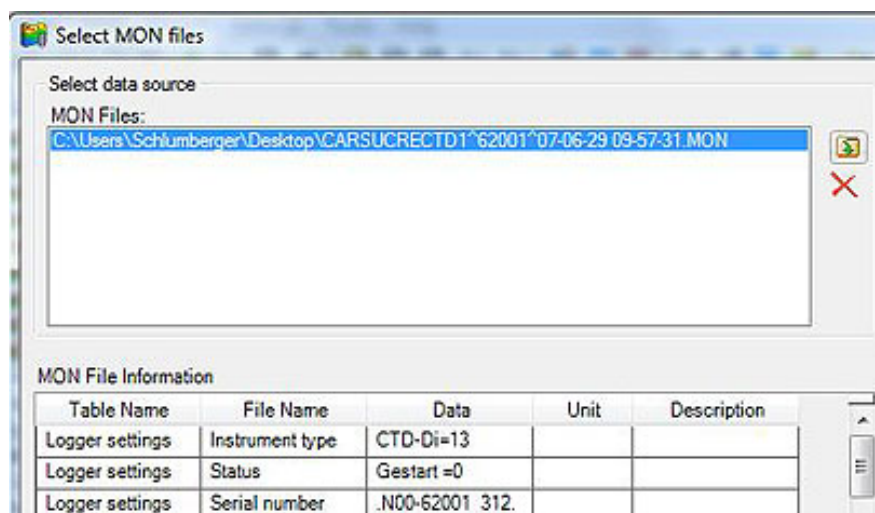
## Backing Up Your Project Database in HGA 4.0

One of the many new features available in [HydroGeo Analyst 4.0](#) is the ability to import your water level data directly from your MON file. The steps below explain how to take advantage of this new feature!

Select Project>Import>.MON Data

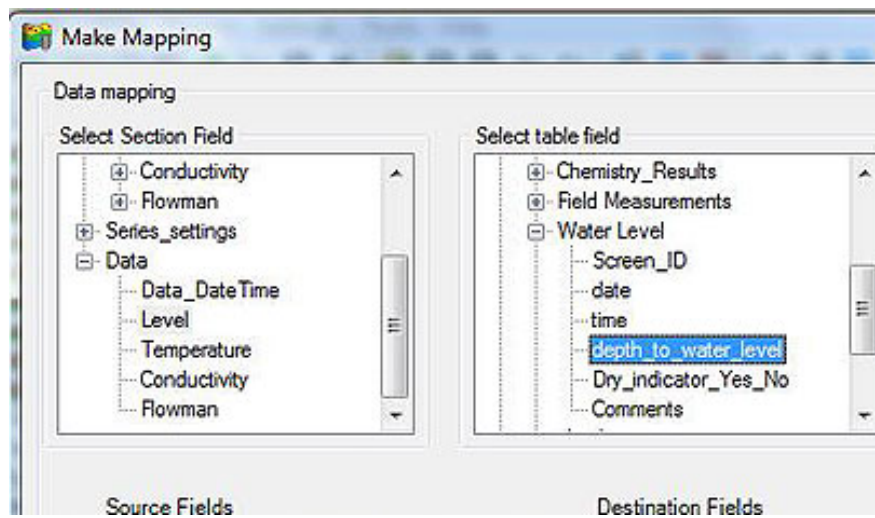


Select the desired .MON file to be imported by choosing the "Open Folder" button followed by "Next". The selected file will now appear under the "Select data source" window.



Note: That multiple .MON files can be selected for import and that the water level values need to be calculated with respect to the top of the well casing. This can be completed through SWS datalogger software (i.e. LDM) by performing barometric compensation on the .MON data using the "Top of Casing" method.

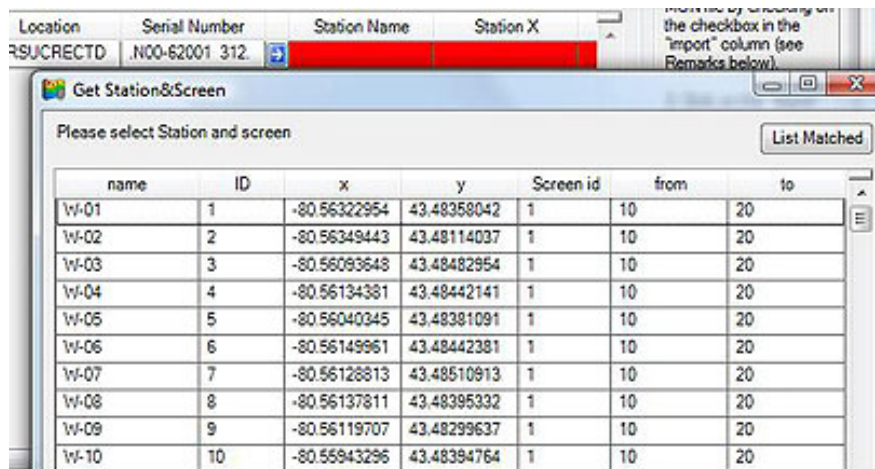
Once you have selected your file(s) for import you will next need to map the MON file fields to the appropriate HGA fields/destination. To map a field you will need to select the source field from the MON file in the "Select Section Field" frame and then select the matching destination field from the "Select Table Field" frame. Once you have done this select "Map". After mapping all of your fields select "Next".



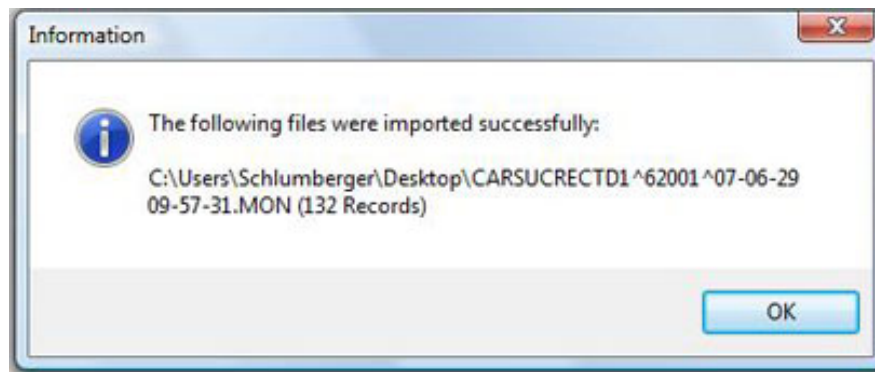
HGA will read the station name in each .MON file and attempt to find an appropriate match in the current HGA project. If one is found, you may proceed. Otherwise, the Station Name and coordinates will display a colour and you will need to specify the appropriate destination station name. The colour displayed in the information table reflects the number of stations that can be matched in the current HGA project, with white referring to a single station being found, red that no matching station names have been found and yellow indicates two or more matching stations exist.

Logger Type	Location	Serial Number	Station Name	Station X
TD-Di=13	CARSUCRECTD	.N00-62001 312.		

If the row is either red or yellow you will need to select the blue box with the white arrow and manually specify a destination station name from the HGA database. Once you have found and selected the appropriate station, select "OK".



Once you have selected the correct station, if applicable, select the "Import" button to import your .MON file into HGA. If successful you will receive the following confirmation window.



For more information, please contact:

Phone: +1-519-746-1798

Email: [sws-support@slb.com](mailto:sws-support@slb.com)

Website: [www.waterloohydrogeologic.com/support.htm](http://www.waterloohydrogeologic.com/support.htm)

TOP

**Thank you for reading Water Solutions in Perspective.**

For more information about Waterloo Hydrogeologic, please visit: [www.waterloohydrogeologic.com](http://www.waterloohydrogeologic.com)



**Waterloo Hydrogeologic, Inc.**  
A Schlumberger Company  
460 Phillip Street, Suite 101  
Waterloo, Ontario  
Canada N2L 5J2

Phone: 519-746-1798  
Fax: 519-885-5262  
[sws-info@slb.com](mailto:sws-info@slb.com)  
[www.waterloohydrogeologic.com](http://www.waterloohydrogeologic.com)

**Your subscription:** The preceding message was sent to you as a service by Waterloo Hydrogeologic. If you do not wish to receive future editions of this newsletter, please reply to this message with the word 'Remove' in the subject line.

**Can't see the images?** If your Outlook email client does not automatically download the images in this newsletter, complete the following instructions to identify the domain from which this newsletter is sent as "safe".

1. On your Outlook menu bar, go to: Actions > Junk E-Mail > Add Sender's Domain to Safe Sender's List.
2. After adding the "waterloohydrogeologic.com" domain, go to Tools > Options > Security tab > Download Pictures section > Change Automatic Download Settings button.
3. Select "Permit downloads in e-mail messages from senders and to recipients defined in the Safe Senders and Safe Recipients Lists used by the Junk E-mail filter."

© 2007 Schlumberger - All rights reserved.

\*Mark of Schlumberger