

News

Welcome to the Schlumberger Water Services new section, containing the latest news on groundwater software, instrumentation, training, and consulting.

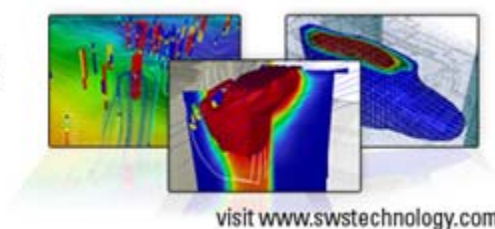


[View Older archived News and E-newsletters \(2003, 2004, 2005, 2006, 2007, 2008\)](#)

Recent Schlumberger Water Services News:

Visual MODFLOW Premium 4.3 Now Released

Empowering You to Do More



visit www.swstechnology.com

Groundwater News In Perspective Spring 2008

Products & Technology

New Visual MODFLOW Premium 4.3 The industry standard is now stronger and more versatile

Obtain in-depth information by investigating wells spanning over multiple layers; dramatically reduce run times when simulating models; leverage the power of your PC's dual processor when simulating multiple species. Visual MODFLOW Premium* 4.3. is loaded with muscle to help groundwater experts deliver complex projects faster.

The industry standard in groundwater modeling now integrates new and enhanced features including the Multi-Node Well (MNW) package, support for MODFLOW-SURFACT 3, MT3DMS multi-processor support, improved Wells Manager, and two numeric engine updates. Give it a test drive by downloading a demo today.



[Download a Demo Now!](#)

[Visual MODFLOW Premium 4.3 Flyer](#)
[Visual MODFLOW Premium 4.3 Demo Tutorial](#)
[Visual MODFLOW Premium Website](#)

[Groundwater Software](#) | [Contact Us](#)

First SWS Groundwater Research Lab in Mexico: Researchers now have full access to the latest groundwater software in the industry

The inauguration of the first SWS groundwater research lab at the end of April was a complete success. Fully equipped with Visual MODFLOW Premium*, Hydro GeoAnalyst*, AquaChem*, AquiferTest Pro*, and Visual HELP*, the lab represents a major cooperative endeavor between SWS, the Water Institute of the State of Nuevo Leon, and ITESM – one of the best private universities in Mexico.

This lab is part of several key research labs created and directed by the Research and Innovation Park from the State of Nuevo Leon in an effort to raise the level of knowledge and research and development on many subjects, including water resources management. The combination of the ITESM and the Water Institute's top-notch applied scientific research and the cutting-edge SWS technology will dramatically expand knowledge amongst researchers and post-graduate students alike.

[Groundwater Software](#) | [Groundwater Instrumentation](#) | [Contact Us](#)

[top](#)

Consulting

Westbay System used for remedial investigation of contaminated groundwater in fractured bedrock at Maryland Superfund site

Between 1962 and 1988, the present-day Spectron Superfund site in Elkton, Cecil County, Maryland USA was the location of Galaxy Chemicals/Spectron, Inc., a company that recycled chemical solvents and blended fuels. In 1988, after nearby residents complained of careless practices at the plant, the State of Maryland shut Spectron down.

Following geophysical testing and sampling of the borehole, the Westbay* System from Schlumberger Water Services was installed and data was collected from different intervals within the same borehole.

[Click here to read the full story](#)

[Groundwater Services](#) | [Contact Us](#)

Schlumberger Water Services (SWS) Provides A Unique Water Quality Evaluation

Schlumberger Water Services (SWS) recently demonstrated the ability to estimate future impacts of acid tailing effluents seeping into a river flowing in the valley below the mine. Impacted river water mixed with a number of downstream tributaries prior to the compliance point for the mine.

[Click here to read the full story](#)

[Groundwater Services](#) | [Contact Us](#)

[top](#)

Events

Conferences & Events

Special Announcement

"Feasibility Study for Raw Water Supply to a Proposed Reverse Osmosis Plant on New Providence Island, Bahamas"

Paper to be presented at 20th Salt Water Intrusion Meeting (SWIM) scheduled June 23-27, 2008 in Naples, FL.

By Weixing Guo, Wm. Scott Manahan, and Thomas M. Missimer
Schlumberger Water Services, Fort Myers, FL, USA

ABSTRACT

A hydrogeological investigation was conducted to study the feasibility of raw water supply to a proposed reverse osmosis (RO) plant on New Providence Island, Bahamas. The study included field investigation and development of a SEAWAT model. After calibration, the model was used to evaluate the long-term water quality changes due to different withdrawal scenarios. Both wellfield and lake withdrawals were considered. The results indicate the raw water total dissolved solids (TDS) concentration would increase quickly due to vertical migration of salt from below. There is no significant difference to the simulated water quality changes between well or lake withdrawals.

[Contact us for full details](#) | [Conference Website](#)

Visit us at these upcoming events:

Event	Date	Location
Water and Sanitation in International Development and Disaster Relief	May 28-30	Edinburgh, UK
International Mine Water Associating Congress	June 2-5	Karlovy Vary, Czech Republic
AWW ACE08	June 8-12	Atlanta, USA
20th Salt Water Intrusion Meeting (SWIM)	June 23-27	Naples, USA
Groundwater & Climate in Africa	June 25-28	Kampala, Uganda
Water Management in Mining	July 9-11	Santiago, Chile
American Membrane Technology Association/SEDA 2008 Joint Conference & Exposition	July 13-16	Naples, USA
Florida Environmental Permitting Course	July 16-18	Marco Island, USA
Argentina Mining	Aug 25-28	San Juan, Argentina
Wyoming PET Association	Aug 27-28	Gillette, USA

[Contact Us For More Information](#)

[top](#)

Courses & Workshops

Schlumberger Water Services Training Course Series and Workshops

The Schlumberger Water Services Training Services Division has been offering a range of educational courses for the past 17 years. Our courses have been designed to decrease the confusion typically associated with technical topics, and include hands-on learning using the world's most sophisticated software programs. Participants of our courses gain practical insight into a variety of environmental issues, and learn cost-effective techniques to achieve project objectives.

Upcoming SWS Training Courses & Workshops:

Course	Location	Date
Applied Groundwater Flow & Transport Modeling	Waterloo, Canada	June 3, 2008
	Paris, France	July 1, 2008
Making Sense Of Environmental Data With Hydro GeoAnalyst	Lima, Peru	July 15, 2008
	Waterloo, Canada	August 19, 2008
Making Sense Of Environmental Data With Hydro GeoAnalyst (HGAI)	Tallahassee, USA	June 18, 2008
Making Sense Of Environmental Data With Hydro GeoAnalyst (HGAI)	Tallahassee, USA	June 23, 2008
Modeling For The Mining Industry	Santiago, Chile	August 12, 2008
Water Quality Data Management & Modeling	Waterloo, Canada	June 17, 2008
	Waterloo, Canada	August 26, 2008
Finite Element Groundwater Modeling (FEM)	Lima, Peru	July 22, 2008

[Integrated Aquifer characterization & Groundwater Modeling \(IACM\)](#)

Waterloo, Canada

August 12, 2008

[Visual Pocos](#)

Sao Paulo, Brazil

July 15, 2008

[Custom Open Enrolment Modeling Courses](#)

Waterloo, Canada

July 22, 2008

[Schlumberger Water Services Workshops](#)

Waterloo, Canada

July 7, 2008

Lima, Peru

July 21, 2008

Boston, MA

September 15, 2008

Tampa, FL

October 7, 2008

[SWS Training Course Series](#) | [Course Schedules](#) | [Contact Us](#)

[top](#)

Tips & Tricks

Setting Up a Batch Run in Visual MODFLOW

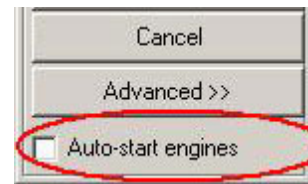
Multiple projects can be run in the VMEngines interface of Visual MODFLOW. This is useful if you would like to run several different models at once and/or are comparing the results of similar models with slightly different parameters.

To run your models in batch mode, each model must be translated first. Open each model separately and, in the Run menu, select the engines to run and translate the files.



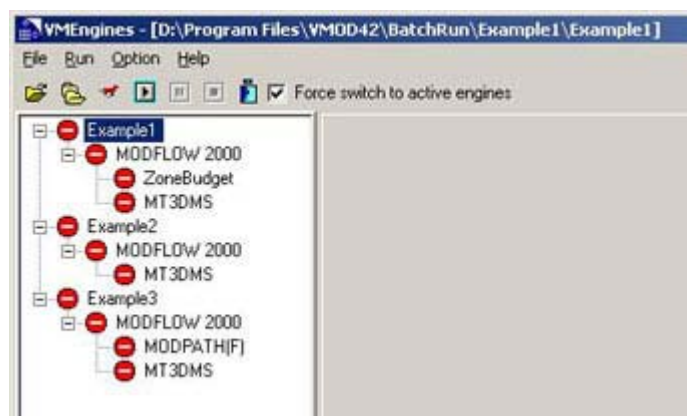
The numeric engine(s) available for the batch run will correspond to the last individual run of that model. If you would like to run additional engines that are not listed, you would need to open each model separately, go to the Run menu, select the engines to run from the dialog, then select translate.

When each of the models have been translated you may start your batch run. Open one of the models in the batch run and open the Run menu. When running a batch of simulations, it is recommended to disable the VMEngines Auto Start feature (from the Engines to Run window):



Select Run from the Engines to Run window.

In the VMEngines window, select File>Add Project and browse to each model (*projectname.vmf*) you wish to run. The selected projects will appear in the project tree.



You have the option to either run all simulations (in batch mode) by clicking on the Start all Projects icon, or run the currently selected project in the Project Tree by clicking on the Run project icon.



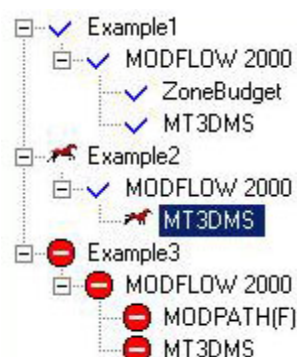
Please be aware that if a model fails to converge, user input will be required to clear any error messages before the batch run can continue.

If you would like to remove an engine to be run, you can manually delete engines from a project run by right-clicking on the engine and selecting Delete.

The Visual MODFLOW project files selected must be opened and translated by the current version of Visual MODFLOW before they can be added to the Project Tree.

Once the appropriate projects and engines have been selected, start the batch mode by selecting the Start all Projects icon. Visual MODFLOW will run all of the selected projects.

Open each project individually to view the results of the simulation.



[SWS Technical Support](#) | [Software FAQ's](#) | [Contact Us](#)

[top](#)

DHI

Older Archived News and SWS E-newsletters (PDF)

Archived Schlumberger Water Services News

[Schlumberger Water Services Acquires Water Management Consultants](#)
[Diver-NETZ Wireless Groundwater Monitoring Network Product Release](#)

2008 Archived E-newsletters

- [Winter](#)
- Spring
- Fall
- Winter

2007 Archived E-newsletters

- [January 2007](#)
- [February 2007](#)
- [March 2007](#)
- [April 2007](#)
- [May 2007](#)
- [June 2007](#)
- [July 2007](#)
- [August 2007](#)
- [September 2007](#)
- [October 2007](#)
- [November 2007](#)
- [December 2007](#)

2006 Archived E-newsletters

- [January 2006](#)
- February 2006
- [March 2006](#)
- [April 2006](#)
- [May 2006](#)
- [June 2006](#)
- [July 2006](#)
- [August 2006](#)
- [September 2006](#)
- [October 2006](#)
- [November 2006](#)
- [December 2006](#)

2005 Archived E-newsletters

- [January 2005](#)
- [February 2005](#)
- [March 2005](#)
- [April 2005](#)
- [May 2005](#)
- [June 2005](#)
- [July 2005](#)
- [August 2005](#)
- [September 2005](#)
- [October 2005](#)
- [November 2005](#)
- [December 2005](#)

2004 Archived E-newsletters

- [January 2004](#)
- [February 2004](#)
- [March 2004](#)
- [April 2004](#)
- [May 2004](#)
- [June 2004](#)
- [July 2004](#)
- [August 2004](#)
- [September 2004](#)
- [October 2004](#)
- [November 2004](#)
- [December 2004](#)

2003 Archived E-newsletters

- January 2003
- [February 2003](#)
- [March 2003](#)
- [April 2003](#)
- [May 2003](#)
- [June 2003](#)
- July 2003
- August 2003
- [September 2003](#)
- [October 2003](#)
- [November 2003](#)
- [December 2003](#)

[Return to top](#)